



Sipping & painting to \$1,000 for school art program

Local school parents mixed with art enthusiasts and others from across the Peninsula to discover their artistic flair at a South Arm Primary School Association fundraiser. 30 attendees sipped and painted an evening away raising \$1,000 to support the school's art program.

Local artist and art teacher, Erin, catered for all artistic capabilities, supporting every stroke of the brush. It was an evening of laughs, surprises and joy in being creative, held in the perfect venue, our historic Calverton Hall. And everyone went home with their very own piece of artwork!

Thanks to our community for supporting the art program at our little school. These funds will help Erin do more wonderful work with our kids, inspiring them to further develop their creativity.



It was successful on many levels so we plan to host another Sip & Paint – stay tuned!

- South Arm Primary School Association

SAPRA logo takes on a coastal vibe

After 36 years, our logo has taken a refreshing dip in our surrounding waters, emerging looking smarter with a new colour.

In the first SAPRA newsletter (Apr 1989) a competition for logo ideas was launched with the winner being Mrs J Cuthbertson. Final artwork was done by Tony Hickey and presented in the October edition. It featured the Iron Pot lighthouse, reflecting that SAPRA too looks out ... for our community. It was then slightly tweaked to become the more familiar current maroon version.

Why the change? The initial aim was a more clear, crisp image to work at any size - eg print, web, signage - without losing its integrity. As work progressed, other colours were tested with our wonderful graphic designer, Julia Dineen, presenting two options - a tweaked maroon and teal. Feedback was sought with SAPRA's first president, Bryce Harvey, saying "I love it, it's the colour of our Peninsula!". All other feedback was very positive saying how well it reflected our coast and was much sharper.

If you're reading the b/w printed version of SAP News, fear not - the glorious colour digital edition is available on the website, southarm.tas.au where past editions from 2010 (and No.1) can also be found.

You'll also see the logo popping off the page along with SAPRA's long history some of which might surprise you!

NB - Peninsula = From Forest Hill Rd south to the tip of Arm End!

- Kerry Scambler | SAPRA President | 0407 875 460 | SAPRApres@southarm.tas.au | www.southarm.tas.au



October 1989



to September 2025



SAPRA

We acknowledge the Palawa (Tasmanian Aboriginal Community) as the traditional owners and ongoing custodians of lutruwita/Tasmania - its land and waters. We acknowledge their long history and deep connection to this place and pay respect to Elders past, present and emerging.

The paper and printing of this newsletter is kindly supplied by Heather Chong.

About this newsletter

This newsletter has been published since 1989 by the South Arm Peninsula Residents' Association Inc. (SAPRA). It is distributed bi-monthly across the South Arm Peninsula community - Sandford, Cremorne, Clifton Beach, South Arm and Opossum Bay.

Opinions expressed in articles are not necessarily the views of the Committee.

Please note this edition was printed on 19 September 2025 - some details may have changed by circulation date.

Contributions to the Dec-Jan issue close

Friday 14 November 2025

Individuals and groups are invited to submit notices, reports, photos, articles or other contributions. Send contributions to editor@southarm.tas.au.

The editorial team reserves the right to edit contributions for space, style and suitability purposes. If time permits contributors will be notified of the final copy.

Advertising enquiries - Kerry Scambler,
SAPRAPres@southarm.tas.au | [0407 875 460](tel:0407875460)

Digital newsletter in colour!

Available in advance of the printed edition.

To subscribe, email - editor@southarm.tas.au

Live links - web pages, Facebook, email, phone numbers.

Find all editions back to 2010 here:

www.southarm.tas.au/south-arm-news

Printed copies

Delivered to your mailbox (Sandford, Cremorne, Clifton Beach and Opossum Bay), available at South Arm Post Office & General Store, Touch of the Mo Café, South Arm Community Pharmacy, Lauderdale Post Office and South Arm Community Centre.

SAPRA Committee:

President: Kerry Scambler | [0407 875 460](tel:0407875460)
SAPRAPres@southarm.tas.au

Treasurer: Gillian Waldie [0408 123 906](tel:0408123906)
SAPRATreas@southarm.tas.au

Secretary: Vacant

General Committee

Noela Foxcroft	0418 600 707
Karen Kelly	0439 474 370
Tahnee Byas	0481 948 590
Michelle Blom	0438 489 974
Michael Topfer (History/Membership)	0400 416 099

To address a committee meeting, please contact the President.

SAPRA in your community

Welcome to Spring - the perfect time to launch our fresh new logo!



Our agendas are always full, reflecting the wide range of work we continue to do for our community. You might not always hear or see it but we're a bit like ducks, paddling like mad, out of sight!

Whilst we're supported by many marvellous volunteers - from the centre, market and bus, to this newsletter and beyond - we need more voices around our Committee table. It can be very rewarding so if you're even a little interested, please get in touch for more information.

AGM & General meeting. Always an informative and enjoyable evening, not just hearing from SAPRA but a range of other local community organisations. We also hope to have some updates from Council on various projects/issues to share.

Buzzing in the Plot. It's not just the honey bees abuzz in the community garden, there's a new Big Bee in town! Thanks to the South Arm Garden Group for their donation of a fantastic sculpture by Peter Hodoniczky. Should we name it?



Market volunteers needed.

This event's reputation spreads far and wide and it's fuelled by a dedicated volunteer team. We need more volunteers to help set up and/or close down so if you'd like to know more, please get in touch with Deb ([0432 281 022](tel:0432281022)) or myself.

If you have any issues or projects you'd like us to know about, please get in touch.

- Kerry Scambler | President | [0407 875 460](tel:0407875460)
SAPRAPres@southarm.tas.au | southarm.tas.au

SAPRA AGM & GENERAL MEETING

7PM, TUESDAY 28 OCTOBER

SAPRA's AGM and activity report
plus updates from many other
local organisations.

All welcome

South Arm Community Centre
9 Calverton Place, South Arm

Rainfall on the Peninsula



	Jul/Aug '25	'25 YTD	'24 YTD	
Cremorne	38.8/20.5	230.3	306	G. Rodven
Op. Bay	55.6/12.8	283.7	309.5	T. Quine
Sandford	33.5/33.9	275.1	327.1	B. Mollison
South Arm	50/16	290.5	304.5	G. Hay
IPGC	41.1/14	246.4	n/a	

SA Aug: rain over 13 days but lowest recorded in 9 years! OB Aug also very low! SF Aug much wetter!

ladies, mens & kids
clothes & accessories

South Arm Community Centre - 9 Calverton Place

Enq: TEXT [0418 566 119](tel:0418566119)

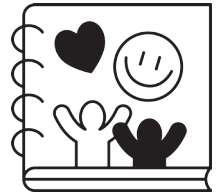
Mon: 10am – 12 noon
Fri: 1pm – 3pm
Sat: 1pm – 3pm

Market Days: 9:30am – 1pm
Other times by appointment.

Most items only \$2
Premium items \$5

Peninsula Memories - E's Story

It was 46 years ago (1979) and I was 15 years of age when my parents bought our family shack in Opossum Bay. It was a long hiatus for Mum and Dad's return to the Bay. Mum's mother and father had a family shack on the beach along Spitfarm Road where Mum and her three siblings enjoyed their formative years in the early 1940s. Her father died in his late fifties and subsequently my Grandmother sold the shack without telling the family who were all extremely upset.



Mum, devastated, never visited Opossum Bay again and instead, our family shack life became Dodges Ferry. It wasn't until 1979 that on a chance visit back to Opossum Bay and seeing a "for sale" sign on a property on Spitfarm Road right on the beach, that a return was pretty much a "done deal". And so began another generation of our family enjoying the magic of Opossum Bay and beach life.

I remember the old shack had a large bathroom and toilet facing the beachside, the best view a toilet could have, a totally wasted kitchen and living area away from the view and a detached creepy sleep out at the side of the block. After only a few years the dividing walls were removed, the outhouse demolished and the original shack became a "postage stamp" within the new walls of a larger open plan living/dining area and large glass windows showcasing the glorious beach views.

I remember Mum and Dad hosting many parties with long-life friends but also extending their friendship to many locals who loved their infectious personalities and welcoming nature - long neck beers and wine chilling in the fridge with Mum whipping up a platter from whatever available. Mum and her brother were members of the Melody Lane Singers, so every year Mum would host the group's Christmas Party. In fact, our Christmas days always ended at Opossum Bay, where we could relax, stay and enjoy Boxing Day together.

I remember significant weather events. Twice the wind blew half the roof off, including rafters. Another time two large windows blew in with the main bedroom window, including its frame and glass (still intact), ending up on the bed, covering it like a quilt. Luckily Mum had decided to sleep in the other bedroom due to the noise of the wind. After another event, the beachfront became so undermined that a ladder was required to get into the boat shed. I have never seen it that bad again.

I also remember going to the corner store to hire the tennis court (corner of Marsh Street and Spitfarm Road) and fetch the key. Playing tennis was always a fun diversion even though I was hopeless at tennis.

I was married at St Barnabas Church. We hired a marquee and had it erected at Calverton Hall grounds. Dot Kelly and her crew did the catering. It was fabulous and, although the marriage did not last, the memories of the occasion at Opossum Bay and the local input still remain.

Our shack stayed in the family until Mum's death in 2016 when we had to make the hard decision to put it up for sale. However, I'm fortunate to have had my own shack on Glenvar Beach since 1993, so my story continues with my own family.

Opossum Bay is simply my most favourite place!

Co-editor's note: Kerry and I are so grateful for the "Peninsula Memories" contributions. Feedback from readers has been great. The recording of such memories can be a very pleasurable experience, trigger beautiful memories in our readers and help us capture the personal side to our South Arm Peninsula history. We have another great piece planned for the Dec-Jan issue - wonderful memories of weekends and holidays at Clifton Beach. **Share your Peninsula Memory, email: editor@southarm.tas.au**

Peninsula Calendar



October:

05: SAP Community Market
11: St Barnabas Open Day (p9)
12: St Barbabas Animal Service (p9)
19: South Arm History Walk (p10)
31: Halloween at Cremorne Bowls (p5)
Halloween at the Mo Cafe

November:

02: SAP Community Market (p9)
08: Cremorne Quiz Night (p5)
14: Closing date for contributions to the Dec-Jan newsletter issue (p2)
23: Cremorne Christmas Market @ The Bowlo (p5)



John Paul II
CATHOLIC SCHOOL

Your local Catholic Primary school

'Inspired learning in a wonderful school community'

Private school bus servicing the South Arm Peninsula
Before and After School Care
Early Learning Centre for 3-5 year olds
Located in the heart of Clarence Plains, Rokeby

Enquiries: Ben Morgan | Principal
03 62477104 | johnpaul.tas.edu.au



TIMELY TAX & ACCOUNTING

Pushed for time?
Need an **EFFICIENT, AFFORDABLE** and **EXPERIENCED** service?
Look no further.

Timely Tax & Accounting can cater to all your Tax, BAS, Bookkeeping and Financial Statement needs.

Tax Returns from as little as **\$80.**

Drop in on your way home!
Call for an appointment **6248 8536**
Office: 1544 South Arm Road, **Sandford**

COREENA NORRIS - 0417 549 521
coreena@timelytaxandaccounting.com.au

PETER BLACK - 0400 049 282
peter@timelytaxandaccounting.com.au

ML Egeria South Arm Peninsula History Cruises Returning Sunday 15 March 2026!

SAPRA, in conjunction with the Motor Yacht Club of Tasmania, will again host History Cruises on board the historic ML Egeria.

Michael Topfer will provide his usual expert commentary on board. Booking details to be advised before Christmas.



Interested to learn more?
Enquiries: **0400 416 099** | history@southarm.tas.au

Peninsula Surf Art

The South Arm Peninsula has an abundance of artistic talent. One of those talents is Opossum Bay resident Asha Vaughn who in her final two years at Rosny College was inspired by her teachers to express her creativeness in any way she chose.



She chose a subject close to her heart. Introduced to local surfing by her father, Asha found herself more comfortable on-shore with a camera, capturing local peninsula surfers in action - her favourite subject being her father, Simon!

For her college major art project Asha applied a technique called Cyanotype* printing to produce spectacular images from her photographic negatives. The results are amazing!



Asha is now in her first year of a Media Communications degree course at UTAS, applying her creative skills to the art of effective communication. Her artistic hobbies will continue to be an important part of her life but right now she has a career to focus on!

**Asha prints her photo negatives on plastic which is placed over a base of paper or fabric coated with a light sensitive solution. The UV light from the Sun does the rest! Development time depends on the day - if little sun it could take an hour but on a very sunny day, just a few minutes.*

Community Club Precinct Open Day

On Sunday 14th September the South Arm RSL & Community Club hosted an open day to showcase the range of facilities around the site.

The Community Club, South Arm Peninsula Men's Shed, Iron Pot Golf Club and RSL Sub Branch all opened their doors and invited members, locals and visitors to come and see what is available.

All organisations were very happy with the number of visitors throughout the afternoon who inspected their facilities and then enjoyed music from Jeremy Matchem and tucked into the delicious complimentary roast pork rolls in the Club.

- David Skegg | President | president@southarmrsl.com.au
southarm.tas.au/south-arm-rsl-comm-club



SOUTH ARM RSL AND COMMUNITY CLUB INC



SOUTH ARM PENINSULA
MEN'S SHED



Honouring our Vietnam Veterans

On 18 August, a small group, including local veterans and senior students from Bayview College, gathered for the second Vietnam Veterans Day service held at the South Arm RSL Memorial Park.

RSL Sub Branch President, Terry Roe, read out the honour roll of 17 young Tasmanian men killed in the Vietnam War and reflected on the continuing work done by the Sub Branch to help Veterans and their families, staying true to the Vietnam Vet motto...

"Honour the dead but fight like hell for the living".

A service will be held again in 2026 and we invite community members to join us.

- Terry Roe, President | southarmrslsb@gmail.com



SWITCH TO AN ENERGY EFFICIENT WATER HEATER & SAVE!

Save up to **65%** on your water heating bills.

WITH A MIDEA HEAT PUMP

PARR'S
HEAT PUMP & REFRIGERATION CENTRE

6273 1577 | parrair.com.au

Do you like gardening?

If you do, just an hour of gardening would be a great help in maintaining our lovely community. Here are a couple of gardening gatherings, if you'd like to join in.

St Barnabas Church - 1st Sat/month 10am-12pm

Iron Plot Community Garden @ the Centre

- every Fri 10am-11am (approx)

Enquiries: Rae 0417 555 175



South Arm Community Centre

1st Tuesday of the month

Doors open 7pm at 9 Calverton Place, South Arm

- 15 games per session
- Each game costs \$1 to play (\$15 total)
- Cash prizes
- Tea, coffee, chips & chocolates available to buy
- BYO nibbles & drinks (alcohol included)

Cremorne Corner



Pipe Clay Coastcare Group

The BIG Quiz - Sat. 8 November

Do you know?

What is the operatic term that refers to Mozart's compositions, in chronological and thematic order?

Neither do we!

You don't have to be a classical music tragic, watch Fox Sport 24/7 or be a history professor to have an inkling about the trivia on offer. **What's even better is that there will be loads of lucky door and spot prizes.**

If you are a local business who would like to support our group and this evening of fun please get in touch.

Tables of six - a smidge of flexibility but perhaps not for previous winners (more brains usually = more arguing!).

\$20 per person, deposit on booking, ph 0434 499 730.

Working Bee

Father & son, Chris & Finn, were hard at work at our recent working bee removing Cape Ivy. Thanks to the many hands that helped remove 960kgs!

- The Coastcare Team
0408 121 304 | Facebook |
pipeclaycoastcare@outlook.com



C Breeze

Thanks to the many locals who have already submitted articles or are busy penning away. There is still time to get in your article too.

We'd love to hear about:

- Sporting, academic or community achievements from our young locals.
- Your local businesses story.
- We love Cremorne – send in your favourite photos.
- Human interest stories (are you new to Cremorne? Introduce yourself).

- Email us at pipeclaycoastcare@outlook.com



Cremorne Bowls and Community Club



& Cremorne Community Group



Cremorne Christmas Market

Get into the festive spirit

Sunday, 23rd November 9:00am to 1:00pm
Cremorne Bowls Club!

Something for everyone - unique gifts, delicious local treats, a fun way to kick off the holiday season.

What You'll Find:

- Handmade gifts, artisan goods
- Locally made crafts and art
- Gourmet treats and festive food
- Fresh coffee and refreshments
- Plants, candles, jewellery & more



Stallholder applications:

If you're a local maker, foodie, artist, or small business looking to showcase your products this festive season, we'd love to have you on board! Spots are limited and filling fast so get in early to secure your place.

- email: events@cremornebowls.com.au

Regular at the Bowlo

CB&CC Bar Tue-Sat, 4:30 – 7:30PM
Thursday Bowls
Details: cremorne.bowls.com.au

Cremorne Calendar

Fri 3 Oct - Filipino Street Food by Pogue^{ft}

Mon 6 Oct - submit articles for the C-Breeze

Fri 24 Oct - The Ember Box Wood Fired Pizza^{ft}

Fri 31 Oct - Taco Taco & Wattlebanks^{ft}

Fri 31 Oct - Halloween Trick or Treating + Food Vans + Spooky Fun for All Ages!

Sat 8 Nov - Quiz Night

Fri 21 Nov - The Ember Box^{ft}

Sun 23 Nov - Christmas Market with Fried and Loaded^{ft} (breakfast and lunch)

(^{ft} - food trucks may alter to other dates or providers, bar open from 4:30pm, food service from 5:00pm, takeaway available.)

ALWAYS RING 000 FIRST

AED

Automated
External Defibrillator



AVAILABLE 24/7

Calverton Hall

South Arm RSL & Community Club

Codes registered with Ambulance Tas



GRANDPOOBA

Septic Tank Pumping

Phone Adrian

0418 955 195

Bag it don't beach it!

Almost 700 dog poos picked up from Clifton Beach by Wildcare Deslacs.

Wildcare Deslacs recently did a dog poo cleanup of Clifton Beach. We covered the length of the beach, from the rocks at the south end to the rocks at the north end. Thanks go to the dedicated Wildcare members who took part in this unpleasant task.



The "stistics" are startling:** a total of 676 poos were collected. The accompanying map shows where the poos were found. Most were at the top of the beach, along the edge of the marram grass zone. **The greatest densities were around the entrances to the beach from the car park, where there were almost 5 for every metre of dune edge!**



- Choose a responsible owner who appreciates the beach as much as you do!



- Bag - don't bury, dispose of thoughtfully!
- Respect the environment, respect other beach users and have a great, guilt free time!

View larger map and survey details at wildcaredeslacs.org.au/news/almost-700-dog-poops-picked-up-from-clifton-beach



Dog poo facts:

- Dog faeces can carry **infectious bacteria and parasites** such as intestinal worms.
- Dog **poos break down VERY slowly on a beach** - sand doesn't contain all the microbes that soil does.
- In the sun on the beach they're likely to simply desiccate. In the shade, they'll often get covered by a disgusting furry mould.

Kicking a hole in the sand and covering your dog's poo is NOT a solution!

Picking up your own dog's poo is very simple - just carry some poo bags. Put your hand inside the clean bag, grab the poo and turn the bag inside out, then tie a knot - totally contactless.

Don't turn your back on your dog and look out to sea while pretending that you don't know what it's doing.

Finally, think of your dog's poo as if it was your own - would you really take a dump on the beach and simply walk away?

- Elizabeth Shannon, Secretary/Communications | info@wildcaredeslacs.org

Crowy's Excavations

- 1.8 / 3.5 / 5.5 tonne excavators with Auger's and Rock Breaker
- Tip Truck hire

Contact Pete
0417 051 537

Fully insured local with over 10 years' experience

ABN 31 175 092 923

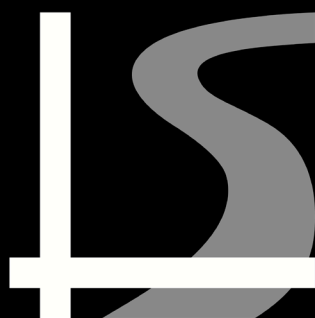


Local agents with sound knowledge and understanding of today's market are based in central Lauderdale.

Contact Deb Dilger
0417 103 891

Robert Goyne
0458 653 553

456 South Arm Rd, Lauderdale
03 6248 7666 fall.com.au



LAZENBY
SAND
PTY LTD

We are open Saturdays!
from 8am - 4pm

We sell direct to the public!

All our products are available by the bag, ute, trailer, and truck load. We also have a courtesy trailer available and **we deliver!**



SWAP'n'GO

8.5kg or 3.7kg gas bottles available at our site today!

Come see our extensive range of soils, gravels and mulches today!

Trading Hours
Monday to Friday 8am - 5pm
Saturday 8am - 4pm
Sundays & Public Holidays CLOSED



South Arm Road, Sandford
Located 3km past Clifton Beach turnoff

Ph 6248 9097

"YES, we deliver!" • EFTPOS • find us on **fb.me/lazenbysand**

South Arm Primary School



My name is Frances Thorp, and I'm proud to serve as the acting principal for South Arm Primary School for Term 3 whilst Stu Warren has been away. It's a privilege to lead a vibrant learning community where curiosity, creativity and connection are at the heart of everything we do. We're also incredibly fortunate to have access to the beach, which allows us to extend learning beyond the classroom through outdoor experiences that connect students with nature, wellbeing and place-based education!

National Science Week: 9 – 17 August

We recently celebrated National Science Week at South Arm Primary, where students explored the wonders of the natural world through hands-on experiments, investigations and STEM challenges. It was a fantastic opportunity to nurture inquiry and critical thinking and to see our young scientists in action!



National Book Week: 16 – 23 August



Over the past few weeks, our school has been buzzing with excitement as we celebrated Book Week—a cherished tradition that brings stories to life and inspires a love of reading across all year levels. This year's theme, *Book an Adventure*, provided a solid platform for our character parades, book stall, quiz and shared-reading sessions. Our students embraced the theme with enthusiasm and imagination.

Learning should be joyful, meaningful, and shared. Whether it's through themed weeks, community events, or classroom projects, we celebrate learning in all its forms and strive to make every student feel seen, supported and inspired. We are looking forward to a busy end of Term and I'm sure all our students and families will enjoy a relaxed break.

- Frances Thorp, Acting Principal, South Arm Primary School | [6239 9126](tel:62399126)

SAFIRE Kids

SAFIRE, what a wonderful family-friendly event! From creating magical fairy gardens to story-time with Play School's Rhys Muldoon, complete with a visit and kiss from Tex the Kelpie himself - there was something for everyone. The music was soulful, the food delicious, and there was a stall for all - infused with a sense of community spirit that permeated the event.



This is truly what the Paradise Peninsula is all about – our community and its tireless volunteers keeping this area thriving.

I want to express my gratitude to all the organisers and volunteers, especially Vix the Fairy Queen, who clearly spent weeks preparing for the day, and to Rhys, who gives up his time freely to be a part of this annual event.

We cannot wait for next year!

-Councillor Emma Goynes and Son Ary





Learn
www.ccc.tas.gov.au/living/waste-recycling/bin-contents

Know what to recycle - it's not difficult!

Not sure?



Check

Do the right thing





RECYCLING TRUCK FIRE CAUSES DELAYS NEAR SOUTH ARM

Help prevent this - it could have been on your street!



**Never the time to get things done?
Give Your Other Fella a call**

**YOUR OTHER FELLA
HANDY SERVICES**

Stu-0475 282 817
yourotherfella@gmail.com

**For even the smallest
home maintenance jobs**

Sandford

Tim Holton
BUILDER / CARPENTER

- Decks • Bathrooms • Renovations
- Smaller Projects

0408 996 176

Friends of the Bays update

Tasmania has just come through a period of political upheaval and theatre. Several members of Friends of the Bays were active during the campaign but after three elections so far this year there is a degree of fatigue.



Our organisation was moderately pleased with a commitment made in the aftermath of the last election that any salmon industry expansion was paused and that there would be an independent enquiry. For us living on the South Arm Peninsula, this pause affects Petuna who have acquired one lease near Betsey Island, and have sought another over near Black Jack Bight on the rather wild west coast of Tasman Peninsula. Of course a 'pause' may just be a stay of execution. We will continue to campaign that the northern reaches of Storm Bay gain a full pardon from the threat of salmon feedlots.

These leases are large, with around 46 pens split between the two areas. This means that an absolute s***tload of fish poo and uneaten food will be pouring into Storm Bay, day after day. If this troubles you, and it should, why not make it known to those who make decisions?

- Ian Sale, Secretary, FotB | www.facebook.com/groups/304200489140424

Voices that Matter

Capturing more South Arm Peninsula History

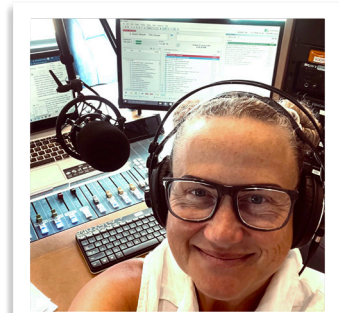
In an age where everything seems to move at lightning speed, there's something truly powerful about pressing pause — and taking time to capture the voices that shaped us.

That's exactly what *Podcasts for Posterity*, a local project based in Cremorne, is all about. It's a chance to record the real-life stories of the people we love — in their own words, with their own warmth, wit, and wisdom.

Whether it's a memory from the old dairy shed, the tale of a first kiss at a South Arm dance, a recollection of life during the 60s, or what it was like to arrive in Tasmania from overseas — these stories are being professionally recorded, edited, and preserved as audio keepsakes. The result? A personal podcast: something families can treasure, share, and hand down for generations.

Why South Arm Peninsula locals will love it:

- It honours our local legends.
- It creates unforgettable family moments.
- It captures how things felt.
- It's simple and heartfelt.
- It strengthens our sense of belonging.



Podcasts for Posterity is more than a nostalgic project — it's a loving tribute to the quiet heroes of our lives: the parents, neighbours, and friends who've shaped our towns and our hearts.

- Rebecca Draper | 0412 080 309 | podcastsforposteritytasmania@gmail.com | podcastsforposteritytasmania.com

South Arm Peninsula Newsletter history highlights

Oct-Nov issues from....

2020: The 'Spit Track' facelift completion....76 volunteers, 200 person hours work! Learn more about this track at www.walkersjournal.com.au/walks/pipe-clay-lagoon-tasmania



2015: South Arm Arts and Crafts Exhibition raises \$4,000 for Legacy Tasmania.
Total from the last six exhibitions over \$22,800!

2010: 'Wrecked in Cremorne' event to celebrate the the centenary of the grounding of the SS Nubeena on Cremorne Beach. Learn more at www.facebook.com/cremorne.boiler.



2005: St Barnabas Church, at 110 years of age, to have a makeover.
Learn more at stbarnabas.au/about-the-church.

SOUTH ARM PENINSULA

MEN'S SHED

GARDEN STAKES

Recycled treated pine

\$1.50 ea (with point)

\$1.00 ea (no point)

approx 1500mm long, 20mm square

0439 202 822

mensshed@southarm.tas.au

Order/collect from the Shed - Wednesdays 9-1
2972 South Arm Road



for all your

TREE REQUIREMENTS

felling, trimming, removal etc.

Ron Suris

0418 122 735



Offcuts from the Shed

Community Garden: It's Spring, and things are beginning to move in our community garden. One of our plots has been made a herb garden, reducing the need for someone to go to Lauderdale for an emergency bunch of dill or basil. And in news that's sure to be welcome, we will have kale!

Please contact us if you would like to become involved with the garden.

Workshops: Meanwhile, indoors, the shed runs the occasional workshop. The most recent featured **wood craftsman Peter Godfrey** instructing on the art of the dovetail joint. Watch out for our workshop opportunities as places tend to go fast.

Health Tip: This column usually has a health tip. Almost everybody received a 'triple antigen' shot when they were very young - protection against diphtheria, tetanus and whooping cough. What you may not know is that those benefits do not last forever. Whooping cough (Pertussis) is a nasty childhood disease, and frequency in the community is on the rise because vaccination rates have fallen. It is also nasty in older or frail people where it tends to drag on.

Parents, grandparents and other family are now urged to get a whooping cough booster if they will have close contact with infants under six months old, and they haven't had one in last 10 years, and that's most of us. Don't take the risk of passing on infection to your newest family members. **See our local pharmacy team to get this sorted.**

- Ian Sale, Communications Officer M: 0418 136 769 | mensshed.southarm.tas.au | mensshed@southarm.tas.au | Facebook

SOUTH ARM PENINSULA MEN'S SHED



St Barnabas - our community church

Open Morning Saturday 11 October 10am: Everyone is welcome. Come and see the progress that has been made over the past 12+ months, to improve the facilities, usefulness and aesthetics of the church/hall/ outdoor area and the cemetery/gardens. Morning tea will be provided. Meet with the people who are ensuring that the church remains a focal point of the community into the future.

St Barnabas Membership: Please consider becoming a member of the St Barnabas group - cost \$5 annually. Members are needed as St Barnabas is run, on the community's behalf, as an incorporated body. Membership form: stbarnabas.au/church-committee/#membership

Annual Calendar: A huge thank you to all the talented photographers who have kindly contributed their superb photographs, showcasing our beautiful peninsula - an important fund-raiser and a great gift at only \$15!

Cemetery: Currently, the cemetery team is endeavouring to identify several un-marked graves. We believe that it is important that our local predecessors are named, if possible, and to that end we are hoping for community assistance to help identify these historic graves.

Annual Animal Service Sunday 12 October 10am: All are welcome to come, bring their pets for a blessing and learn about St Francis of Assisi who cared for our environment and animals.

For further information please visit stbarnabas.au or contact Board Director Terry Roe on 0400 140 870.

- Linda Roe, St Barnabas | stbarnabas.au



South Arm Community Market Report


The September market lacked spring sunshine but the determination of all involved made it a special one.

Thanks to the resilient stallholders and many visitors who supported us (and the kids who ensured parents got them to the free face painting!). A huge shout out to the dedicated volunteers without whom it wouldn't exist and a BIG thank you to Andrew Eaton who saved the day by managing the set up/close down.

October will be busy with stallholders who missed September lining up, including Bruny Oysters and Fried & Loaded food vans. The always popular Reptile Rescue joins us in November and live music brings a festive vibe to every market..

Follow us on Facebook. VOLUNTEERS needed for set up/close down – contact Deb 0432 281 022 | market@southarm.tas.au





**SANDFORD
ELECTRICAL**

- Residential
- Commercial
- Maintenance

Dylan Grubb
0400 132 725
sales@sandfordelectrical.com.au
sandfordelectrical.com.au



**COMMUNITY
MARKET**
SOUTH ARM PENINSULA

5 OCT
& 2 NOV



Ph: 0432 281 022 | market@southarm.tas.au

**SOUTH ARM
PENINSULA
Community Bus**

SOCIAL SUPPORT
Fortnightly shopping trips (\$8 person),
and other assistance available.
Particularly for those unable/uncomfortable to drive.

SOCIAL CONNECTIONS
Families | Friends | Common interest groups
*Keep your group together on the journey.
Enjoy their company and forget the hassle
of driving/parking!*

Enquiries: Steve - 0419 339 415
communitybus@southarm.tas.au
www.southarm.tas.au/community-bus

Local services & notices

Free service for Peninsula businesses. If you know of any listing no longer active please let us know - editor@southarm.tas.au

Accommodation

Cremorne Self Contained Cabin

Great rural location, close to beach.
0434 499 730 | www.airbnb.com/h/cremorne-trinity

Administrative Services

Justice of the Peace

Opossum Bay

David Skegg 0418 374 305 | davidskegg@icloud.com

Justice of the Peace

Doc. witnessing, court affidavits, stat. decs, certifying true copy of original document.
Terry Roe 0400 140 870

Animal services

Sandford Cat Hotel

5 star luxury for your cat.
Hazel Jones 0403 568 999

Automotive

Tilt tray towing, accident recovery, insurance work.

Anthony 0412 110 992

Beauty

Jewellery

Handmade precious jewellery designed & made in South Arm. Gavin 0414 629 185
www.gavinmacsporrnan.com.au

Mj's Hair Design

Fully qual. hairdressers, facial waxing/tinting.
3120 South Arm Rd, Wed to Sat, or by appt. 6239 9612 | 0421 859 408

Mobile Haircuts

Professional haircuts in your home.
Tania 0458 528 258 | Facebook.

South Arm Skin Care

Qual. beauty therapist (19+ yrs). Mj's hair design, 3120 South Arm Rd. Wed-Sat.
0409 552 869 | Facebook.

Ceremony

Oakdown Celebrant

Naming days, weddings & more. Make your day unique. Tara Bellette
0408 367 932 | tarabellette76@gmail.com

Lyn Gallagher, Marriage Celebrant

Weddings, Naming Days, Renewing of Vows, Special Birthdays, Funerals.
0459 769 419 | hopefulandtrue@gmail.com

Marriage & other Life Event Celebrant

Saying I do? Let me be your guide - Beverley Elliot. 0460 519 037 | beverleyfe@gmail.com

Community meetings & activities

Pottery Classes

Laney the Clay Lady. Children, adult and group workshops - small, large and corporate team building events.
Ph 0468 388 560

Bible Discussion - Connect Group

New members welcome. Fridays 10.30am. in Gellibrand Fellowship Hall at St Barnabas Church.
Jane Beavan 6239 9244

Iron Plot Community Garden @ the Centre

Help garden, have a chat and/or help plan - Fridays 10-11am. Open for all the community to enjoy.

Pizza Oven @ Community Garden

BYO wood, oven tools available by arrangement. Free to use but donations to the Community Garden welcome.
Ph 0407 875 460 to book.

Cremorne Community Group Inc

www.cremorne.tas.au | Facebook
cremornecommunitygroup@gmail.com.
Marquee hire for CCG members
ghr@pipshy.com | 0412 305 794

Bridge

Calverton Hall, Wednesdays at 2pm. New members and beginners welcome.
Noela 0418 600 707

Bingo

7pm, first Tuesday monthly @ the Community Centre. Lots of fun!

Craft Group

2nd, 4th & 5th Tues of the month
12:30-3pm, Calverton Hall. \$4/session.
Lesley Gore 6239 9321

Rokeby Girls' & Boys' Brigades

Adventure for girls & boys 5-18yrs.
Thu 5:30 - 7:30pm, at Emmanuel School.
Libby 0416 277 101 | eneduljee@gmail.com

Sandford Scout Group Friends

Fun, community service and adventure!
Joey Scouts (5-7 yrs) Mon 5-6pm, Cubs (8-11 yrs) Mon 6.15-7.45pm Scouts (11-15 yrs) Wed 7-9pm Susanne | sehovington@hovo.id.au

SAPRA Committee Meeting

2nd Tuesday of the month, 7pm at South Arm Community Centre. See p2.

South Arm Community Centre Library, Op Shop & History Room

9 Calverton Place, South Arm
Mon 10am-12pm, Fri & Sat 1pm- 3pm
Market days 9:30am-1pm.

St Barnabas Community Church

Morning service, Sun. 10am. W/bee 10am, 1st Sat./month. | Rachel Todd, 6239 9706 | Jane Beavan 6239 9244.

Exercise & activities

Cremorne Bowls Club

www.cremorne.bowls.com.au 6248 9856

Indoor bowls

Every Monday 1:30- 3pm Calverton Hall. Beginners always welcome!

Evolve Fitness

Tue & Thu 5:30pm, Sat 8am. Sandford Community Hall .First Class Free.
Susan 0488 707 056 | Facebook | evolvefitnessaus@gmail.com

Jayne Martin Yoga

Slow gentle flow suitable for beginners. For more info, contact jaynemartin04@gmail.com

Pilates - South Arm

Contact Helen on 0498 177 916

South Arm Fitness & Wellness Hub

Gym open 24/7. \$14 /week, no lock in contract. Yoga 9am Mon.
Laura 0421 859 408

Tennis Court

\$10/hr. Book at South Arm Store or after hours. Kate 0409 845 245.

Yoga at Lauderdale Hall

Strength & calm Asana, pranayama, Yoga Nidra & meditation. Wed 10.30-12pm.
Margaret 0428 252 560

Food & dining

Fresh fish delivered door to door

Every second Wed 11am-1pm. 30+ years.
Robyn 0438 721 448 | robdaye@bigpond.com

Opossum Bay Store

Open 7 days. Great coffee, fishing, takeaways, groceries, tools, cards, petrol & friendly service. 6239 9134

South Arm RSL & Community Club

Great meals, take-away, bottle shop. Dinner 7 days + lunch on Sun Pizza - Fri/Sat; Asian - Sun/Mon/Tue/Thu. A la carte Wed/Fri/Sat. ph 6239 9171

Touch of the MO Cafe

Mon & Tue Van 8am-2pm
Wed - Sun Cafe 8:30am-3:00pm.
Brunch, Chef's specials, snack menu, coffee cafe smoothies and more.
Phone 6295 5532 | Facebook.

Gardening

AJs Lawnmowing & Maintenance

6 Calverton Place, South Arm. Call Andrew for a free quote 6239 9863 | 0422 992 479

Emma Parker Garden Supplies

Pea straw \$15/bale. 0409 555 098

Last Straw Garden Supplies SA

Pea & barley straw, horse/sheep/chicken manure, potting mix & organic compost. Free local delivery. Adrian 0427 976 618

Landscaping, General Gardening

Develop new gardens rejuvenate old, lawn mowing rubbish removal etc.
Steve 0408 000 645 sbishtas@gmail.com

Worm poo and worms

Natural magic food for veg & plants. \$5 bag poo \$10 bag worms. Free local del. Jill 0419 732 390

Horticulture

Consultant Horticulturist

Plant, weed + disease identification; plant specification; plant propagation + sourcing.
Dr Catriona McLeod, 0400 274 363
contact@catrionamcleod.com

Home & property

Activ8 Electrical & Data Contractor

Commercial & residential. Michael Calabrese 0407 281 383 |
www.activ8electrical.com.au |
activ8electrical@gmail.com

Blakey's plumbing and maintenance [after hours]

Domestic plumbing, blockages & repairs.
Robert 0410 118 254

Construction & Carpentry

For all your building requirements.
Simon 0405 936 652

South Arm Pergolas

For all your carpentry needs from doors to pergolas.
Rohan 0424 644 451

Flatrock Concrete

Formwork, concrete & excavations
Justin 0439 915 386

Greg Steinbauer

Gardening, odd jobs + home maintenance.
0419 136 693 | gstein101@gmail.com

House-sitter Clare

Experienced, reliable, mature & local.
Excellent references. 0450 417 061

Interior Design

DIY consultations, new build & renos. Free discovery call.
Kellie, Hello White Interiors 0421 972 370

Reptile Ranger

Rescue & relocate snakes correctly.
Permit 2001766. Craig 0424 441 488

Rockstar Tiling & Bathroom Renovations.

Waterproofing, tiling & bathroom renovations. Servicing Peninsula & Eastern Shore. Rick 0499 279 561

Snoopy's Gas Fitting

Install, service and maintain. Brett Newell
0448 877 062 | sssnoopy11@gmail.com

Snake Catcher & Re-Locator

Registered. \$70 call out fee. Lauderdale, Sandford, South Arm 0411 511 769

Tassie handyman

Maintenance, carpentry, painting, fencing, small landscaping, windows & doors.
0448 667 732 | Facebook

Tim's Building and Maintenance

Decks, bathrooms, renovations, etc.
0408 996 176

Wicks Carpentry Services

Qual. carpenter - repair works, renovations, extensions, new builds, heritage works.
0431 839 866

Cleaning Services

Regular residential cleaning, air bnb cleans, one off deep cleans.
Contact Ella 0427 340 203
ellagrwest@gmail.com

Heat Pump - service/installation*

Mates rates.ARC Licence No. L186161.
Contact Mark 0439 828 943
mtr33434@bigpond.net.au
* conditions apply

Health Services

Converse Online Speech and Art Therapy

Building confident communicators.
0487 718 750 |
www.conversetherapy.com.au
admin@conversetherapy.com.au

South Arm Community Pharmacy

4/3120 South Arm Rd 03 6239 9529, Fax 03 6239 9600
info@southarmpharmacy.com.au
Mon -Fri 8.30am-5.30pm, Sat 9am- 12

Special Interest

Genealogy Research

Start your family tree or solve a mystery.
\$50 initial review inc 2hrs research.
Maree 0409 169 659 |
harriets.garden@bigpond.com

Maurice Potter History Room

SA Community Centre. Join the History Facebook group. history@southarm.tas.au
Michael Topfer 0400 416 099

Transport & equipment

SA Peninsula Community Bus

Social support & connections. Group hire available - 11 seats + vol driver, tow bar.
Steve 0419 339 415 |
communitybus@southarm.tas.au

Wheelchairs and walker

Short-term loans to SA RSL Sub-Branch Members and Defence Services personnel (and dependents). Peter 0477 706 497

Community Transport Services Tasmania

Community based, not-for-profit providing affordable shared door-to-door transport.
Call My Aged Care 1800 200 422.

Venue Hire

Calverton Hall & Oval Hall Hire

Anita 0415 512 661 | Kate 0409 845 245
Tennis court after A/H as above. Key still available at the shop during the day.

South Arm Community Centre

Special occasions, interest group or business meetings, workshops etc.
0407 875 460 |
SAPRAPres@southarm.tas.au

Volunteering

Coastcare Opossum Bay & South Arm

1st Sunday of month. 10am -12noon.
Different venues. Robyn 0400 119 519

Coastcare Pipeclay

Autumn, Spring & Clean Up Aust Day working bees. 0408 121 304 | Facebook or pipeclaycoastcare@outlook.com

Wildcare—Deslacs(Clifton)

info@wildcaredeslacs.org

Coastcare Mortimer Bay

Leanne 0408 498 468 |
mortimerbay@landcaretas.org.au

South Arm Fire Station

South Arm Fire Station 2nd and last Tuesdays of the month, 7pm
Cliff Munday, 2nd Officer, | 0476 015 911

Sandford Fire Station

Training each Monday 7.30pm
Ben Cox, Brigade Chief 0418 129 954

Clifton Beach Surf Life Saving Club

President Matt Clingeffer, Secretary Katie Groom, info@cliftonbeachslsc.com.au
www.cliftonbeachslsc.com.au

Water carters

IMKH Water Supply & Cartage

Domestic & civil. Marcus 0438 643 176

Reliable Water

Tim 0419 614 457

South Air Water

Damien 0417 928 377

Streamline Water

Wayne 0418 125 096

Wellbeing & health

Acupuncture & Chinese Medicine

Dr Bec Emmerton (TCM). Treating pain, fertility, women's health, health & wellness.
bekemmerton@gmail.com | 0432 079 849

Tara Edwards Reflexology

Qualified. Home visits for relaxation or health concerns (chronic pain, sleep, circulation, & digestion). \$80/hr
Tara 0457 327 482

Naturopath / Nutritionist & Psychic Medium/Healing

Amanda Erskine in Sandford.
Ph 0417 727 065

Pamper Room

Relaxation, Hot Stone, Oncology, Pregnancy Massage and Facials.
Tania 0458 528 258 Facebook
www.pamperroom.com.au

Gaia's Light Spiritual Consultancy

Accredited Reiki Treatment Prac., Chakra Balance, Akashic Records Prac., Wisdom of the Tarot & Write from Source©.
evie@lightmygaia.com | 0466718244
lightmygaia.com |Facebook

Help us

If you have a listing no longer required or you are aware of a listing no longer operating please let us know at:

editor@southarm.tas.au

Worm poo and worms

Natural magic food for veg & plants. \$5 bag poo \$10 bag worms. Free local del. Jill [0419 732 390](tel:0419732390)

Horticulture

Consultant Horticulturist

Plant, weed + disease identification; plant specification; plant propagation + sourcing. Dr Catriona McLeod, [0400 274 363](tel:0400274363) contact@catrionamcleod.com

Home & property

Activ8 Electrical & Data Contractor

Commercial & residential. Michael Calabrese [0407 281 383](tel:0407281383) | www.activ8electrical.com.au | activ8electrical@gmail.com

Blakey's plumbing and maintenance [after hours]

Domestic plumbing, blockages & repairs. Robert [0410 118 254](tel:0410118254)

Construction & Carpentry

For all your building requirements. Simon [0405 936 652](tel:0405936652)

South Arm Pergolas

For all your carpentry needs from doors to pergolas. Rohan [0424 644 451](tel:0424644451)

Flatrock Concrete

Formwork, concrete & excavations. Justin [0439 915 386](tel:0439915386)

Greg Steinbauer

Gardening, odd jobs + home maintenance. [0419 136 693](tel:0419136693) | gstein101@gmail.com

House-sitter Clare

Experienced, reliable, mature & local. Excellent references. [0450 417 061](tel:0450417061)

Interior Design

DIY consultations, new build & renos. Free discovery call. Kellie, Hello White Interiors [0421 972 370](tel:0421972370)

Reptile Ranger

Rescue & relocate snakes correctly. Permit 2001766. Craig [0424 441 488](tel:0424441488)

Rockstar Tiling & Bathroom Renovations.

Waterproofing, tiling & bathroom renovations. Servicing Peninsula & Eastern Shore. Rick [0499 279 561](tel:0499279561)

Snoopy's Gas Fitting

Install, service and maintain. Brett Newell [0448 877 062](tel:0448877062) | sssnoopy11@gmail.com

Snake Catcher & Re-Locator

Registered. \$70 call out fee. Lauderdale, Sandford, South Arm [0411 511 769](tel:0411511769)

Tassie handyman

Maintenance, carpentry, painting, fencing, small landscaping, windows & doors. [0448 667 732](tel:0448667732) | Facebook

Tim's Building and Maintenance

Decks, bathrooms, renovations, etc. [0408 996 176](tel:0408996176)

Cleaning Services

Regular residential cleaning, air bnb cleans, one off deep cleans. Contact Ella [0427 340 203](tel:0427340203) ellagrwest@gmail.com

Heat Pump - service/installation*

Mates rates.ARC Licence No. L186161. Contact Mark [0439 828 943](tel:0439828943) mtr33434@bigpond.net.au * conditions apply

Health Services

Converse Online Speech and Art Therapy

Building confident communicators. [0487 718 750](tel:0487718750) | www.conversetherapy.com.au admin@conversetherapy.com.au

South Arm Community Pharmacy

4/3120 South Arm Rd [03 6239 9529](tel:0362399529), Fax 03 6239 9600 info@southarmpharmacy.com.au Mon -Fri 8.30am-5.30pm, Sat 9am- 12

Special Interest

Genealogy Research

Start your family tree or solve a mystery. \$50 initial review inc 2hrs research. Maree [0409 169 659](tel:0409169659) | harriets.garden@bigpond.com

Maurice Potter History Room

SA Community Centre. Join the History Facebook group. history@southarm.tas.au Michael Topfer [0400 416 099](tel:0400416099)

Transport & equipment

SA Peninsula Community Bus

Social support & connections. Group hire available - 11 seats + vol driver, tow bar. Steve [0419 339 415](tel:0419339415) | communitybus@southarm.tas.au

Wheelchairs and walker

Short-term loans to SA RSL Sub-Branch Members and Defence Services personnel (and dependents). Peter [0477 706 497](tel:0477706497)

Community Transport Services Tasmania

Community based, not-for-profit providing affordable shared door-to-door transport. Call My Aged Care [1800 200 422](tel:1800200422).

Venue Hire

Calverton Hall & Oval Hall Hire

Anita [0415 512 661](tel:0415512661) | Kate [0409 845 245](tel:0409845245) Tennis court after A/H as above. Key still available at the shop during the day.

South Arm Community Centre

Special occasions, interest group or business meetings, workshops etc. [0407 875 460](tel:0407875460) | SAPRAPres@southarm.tas.au

Volunteering

Coastcare Opossum Bay & South Arm

1st Sunday of month. 10am -12noon. Different venues. Robyn [0400 119 519](tel:0400119519)

Coastcare Pipeclay

Autumn, Spring & Clean Up Aust Day working bees. [0408 121 304](tel:0408121304) | Facebook or pipeclaycoastcare@outlook.com

Wildcare—Deslacs(Clifton)

info@wildcaredeslacs.org

Coastcare Mortimer Bay

Leanne [0408 498 468](tel:0408498468) | mortimerbay@landcaretas.org.au

South Arm Fire Station

South Arm Fire Station 2nd and last Tuesdays of the month, 7pm Cliff Munday, 2nd Officer, | [0476 015 911](tel:0476015911)

Sandford Fire Station

Training each Monday 7.30pm Ben Cox, Brigade Chief [0418 129 954](tel:0418129954)

Clifton Beach Surf Life Saving Club

President Matt Clingeffer, Secretary Katie Groom, info@cliftonbeachslsc.com.au www.cliftonbeachslsc.com.au

Water carters

IMKH Water Supply & Cartage

Domestic & civil. Marcus [0438 643 176](tel:0438643176)

Reliable Water

Tim [0419 614 457](tel:0419614457)

South Air Water

Damien [0417 928 377](tel:0417928377)

Streamline Water

Wayne [0418 125 096](tel:0418125096)

Wellbeing & health

Acupuncture & Chinese Medicine

Dr Bec Emmerton (TCM). Treating pain, fertility, women's health, health & wellness. bekemmerton@gmail.com | [0432 079 849](tel:0432079849)

Tara Edwards Reflexology

Qualified. Home visits for relaxation or health concerns (chronic pain, sleep, circulation, & digestion). \$75/hr Tara [0457 327 482](tel:0457327482)

Naturopath / Nutritionist & Psychic Medium/Healing

Amanda Erskine in Sandford. Ph [0417 727 065](tel:0417727065)

Pamper Room

Relaxation, Hot Stone, Oncology, Pregnancy Massage and Facials. Tania [0458 528 258](tel:0458528258) Facebook www.pamperroom.com.au

Gaia's Light Spiritual Consultancy

Accredited Reiki Treatment Prac., Chakra Balance, Akashic Records Prac., Wisdom of the Tarot & Write from Source©. evie@lightmygaia.com | [0466718244](tel:0466718244) lightmygaia.com |Facebook.

Help us

If you have a listing no longer required or you are aware of a listing no longer operating please let us know at:

editor@southarm.tas.au