



# South Arm Peninsula News

Vol.16, Issue 3 | June - July 2026

## Sandford Volunteer Firies recognised for their service

In May members of the Sandford Volunteer Fire Brigade came together to recognise and celebrate the long service and dedication of a number of their members.

Representing combined service and experience of nearly 120 years, the following members were presented with the

### Tasmania Fire Service Volunteer Medal

**David Williams 37 years**

**Benjamin Cox 28 years**

**Axel von Krusenstierna 19 years**

**Paul Lawler 19 years**

**Steve Whelan 16 years**

The TFS Volunteer Medal is awarded for a minimum of "10 years' service with diligence and integrity", with clasps awarded for every additional 10 years' service. The Brigade extends its thanks to the Tasmanian Volunteer Fire Brigades Association for its ongoing support and for facilitating the medal presentation.

The Sandford Volunteer Fire Brigade, as it approaches its 60th year, thanks all recipients for their ongoing contribution to the Brigade, the Sandford and South Arm Peninsula community, and, also the wider Tasmanian community.

Further, the Brigade extends its thanks to the South Arm Peninsula Community for their ongoing support of the Brigade.

Pictured (l to r) David Williams, Steve Whelan, Axel von Krusenstierna and Ben Cox (absent – Paul Lawler).

- Ben Cox, Brigade Chief, Sandford Volunteer Fire Brigade



Tasmania Fire Service



## Much loved community raft returns to home waters

In mid-May, the beacon for beach goers in South Arm summers, the iconic yellow raft, was refloated and is now happily bobbing on its mooring in Half Moon Bay.

It's been missed by our community and visitors for the last two summers when in July 2024, SAPRA's insurer suddenly declined to continue coverage after 14 years of doing so.

Insurance was impossible to source so in September 2024, SAPRA asked City of Clarence for help to save this much loved community facility. In March 2025 came a very welcome offer to take over ownership of the raft and mooring, subject to their engineering inspections and due diligence.

These processes can take a frustratingly long time but standing at the top of Jetty Road and seeing the yellow raft (with its new ladder) at home once more certainly makes all the time, patience and work it took to get here worthwhile.

A big thank you to all the volunteers involved since the first South Arm raft was floated in 1992 and a huge thank you to Clarence Council for taking over stewardship. We're all delighted that it won't be lost after 34 years of providing this popular facility for our Peninsula community and the many visitors to the area.

It's winter now but wonderful to know the raft will be there, ready and waiting for the first warming days of spring and summer.

- Kerry Scambler | President | [0407 875 460](tel:0407875460) | [SAPRApres@southarm.tas.au](mailto:SAPRApres@southarm.tas.au) | [southarm.tas.au](http://southarm.tas.au)



We acknowledge the Palawa (Tasmanian Aboriginal Community) as the traditional owners and ongoing custodians of lutruwita/Tasmania - its land and waters. We acknowledge their long history and deep connection to this place and pay respect to Elders past, present and emerging.

The paper and printing of this newsletter is kindly supplied by Heather Chong.

# About this newsletter

This newsletter has been published since 1989 by the South Arm Peninsula Residents' Association Inc. (SAPRA). It is distributed bi-monthly across the South Arm Peninsula community - Sandford, Cremorne, Clifton Beach, South Arm and Opossum Bay.

Opinions expressed in articles are those of the authors.

**This edition was printed on 22 May 2026 - some details may have changed by circulation date.**

Contributions to the Aug - Sep 2026 issue close  
Friday 17 July 2026

Individuals and groups are invited to send notices, reports, photos, articles or other items to [editor@southarm.tas.au](mailto:editor@southarm.tas.au).

The editorial team reserves the right to edit contributions for space, style and suitability purposes. If time permits contributors will be notified of the final copy.

Advertising enquiries - Kerry Scambler,  
[SAPRAPres@southarm.tas.au](mailto:SAPRAPres@southarm.tas.au) | 0407 875 460

### Digital copy, in colour!

Available in advance of the printed edition, with live links - web pages, Facebook, email, phone numbers.  
All editions back to 2010 at [www.southarm.tas.au/south-arm-news](http://www.southarm.tas.au/south-arm-news)  
To subscribe, email - [editor@southarm.tas.au](mailto:editor@southarm.tas.au)

### Printed copies

Delivered to your mailbox (Sandford, Cremorne, Clifton Beach and Opossum Bay), available at South Arm Post Office & General Store, Touch of the Mo Café, South Arm Community Pharmacy, Lauderdale Post Office and South Arm Community Centre.

### SAPRA Committee:

**President:** Kerry Scambler | 0407 875 460  
[SAPRAPres@southarm.tas.au](mailto:SAPRAPres@southarm.tas.au)

**Treasurer:** Gillian Waldie 0408 123 906  
[SAPRATreas@southarm.tas.au](mailto:SAPRATreas@southarm.tas.au)

**Secretary:** Lynn Ayers 0419 336 499  
[SAPRAsec@southarm.tas.au](mailto:SAPRAsec@southarm.tas.au)

### General Committee

Noela Foxcroft - 0418 600 707; Karen Kelly - 0439 474 370;  
Michelle Blom - 0438 489 974; Michael Topfer\* - 0400 416 099  
Jacqui Stevens - 0407 994 985; Jason Watson 0477 777 916

\* Michael is the contact for History/Membership

To address a committee meeting  
please contact the President.

### Do you like gardening?

If you do and can spare an hour to help your community, here's some gardening gatherings, if you'd like to join in!

**St Barnabas Church** - 1<sup>st</sup> Sat/month 10am-12pm  
**Iron Plot Community Garden @ the Centre**  
- every Fri 10am-11am (approx)  
Enquiries - Rae 0417 555 175





**POT of LUCK**

**Op Shop**

**ladies, mens & kids**  
clothes & accessories

South Arm Community Centre - 9 Calverton Place  
Enq: TEXT 0418 566 119

Mon: 10am – 12 noon  
Fri: 1pm – 3pm  
Sat: 1pm – 3pm  
Market Days: 9:30am – 1pm  
Other times by appointment.

Most items only \$2  
Premium items \$5

# SAPRA - all for our community



## Welcome to winter and, we hope, some rainfall to soothe our dry landscape.

Welcome also to two new SAPRA committee members, Libby Walker and Paul Geappen who joined recently. It's healthy to have a diverse range of people all bringing their own experience and perspectives to the table.

**Our local school** had a great result in their recent external review (P4), particularly with community partnerships. These have always been an important part of school life and after meeting with Bernice Archer, principal from 1978-1988, we're now on a mission to celebrate this era - see why on P4.

**Raft returns.** It's always satisfying to achieve things like this for our community. To the Opossum Bay raft volunteers, our apologies for not being able to achieve the same result for you.

**Advocacy** is one of our core functions and committee member Jacqui Stevens is now working on the issue of sourcing local services for aged/medical conditions See P4.

**Ferals.** Rabbits are a big concern so we've been working with locals on what can be done. More news on this soon. Cats are also a big issue so it's great to have the Sandford Cat Management (+Peninsula) Program launched. (See insert.)

**Visitor info.** A SAPRA sub-committee is now working on how we can provide helpful information for visitors, particularly now the Aurora and Bioluminescence events bring many travellers. Suggestions and feedback welcome.

**Community Bus.** After 3 months in repairs, our bus was back on the road in late March. Along with the usual fortnightly Tuesday shopping trips, it's been to Crawleighwood Garden, taken 'Mrs Marsh' and friends to see the Celia Pacquola show, wedding transfers, afternoon movies, lunches and more. (P9).

**SAPRA membership.** Committee members, Karen Kelly and Jacqui Stevens, spent two mornings in May outside The Mo, showcasing what SAPRA does and why membership matters. Thanks to their work over 60 people joined. Welcome all!

**Harmony Lane upgrade.** We've been advised this is a top 3 priority for funding for stormwater and construction in the 2026/2027 Council budget.

If you have any queries or concerns about local issues or proposals for projects, please contact us.

- Kerry Scambler, President | 0407 875 460  
[SAPRAPres@southarm.tas.au](mailto:SAPRAPres@southarm.tas.au) | [southarm.tas.au](http://southarm.tas.au)

## Rainfall on the Peninsula

	Mar/Apr '26	'26 YTD	'25 YTD	
Cremorne	52 / 3	92.8	82.3	G. Rodven
Op. Bay	44.6 / 9.2	89	96.3	T. Quine
Sandford	52.5 / 6.1	99.7	100.1	B. Mollison
South Arm	45 / 16	97	79.1	G. Hay
IPGC	39.4 / 13.7	84.9	N/A	

Note the April variations across peninsula locations.

# Young veteran's insights on Anzac Day



The South Arm RSL Sub-Branch brought us another special day of remembrance, starting with gathering around Lone Pine Memorial at Fort Direction. It's always such a poignant service, accompanied by the sounds of waves and birds.

The Morning Service's Anzac Day address was delivered by young veteran, Carlo Novak. He spoke of his early childhood and immigrant father instilling the belief there is no greater honour than to serve others and one's country.

After nine years and four tours of duty - East Timor, Iraq, Afghanistan and back to (now) Timor Leste - Carlo decided to discharge and follow a career as a paramedic, still wanting to serve. He then realised the battle wasn't over and his toughest tour of duty, that within his mind, was yet to come.

*"Some of you here have heard me describe what I went through. I often liken it to being trapped in a deep well - cold, alone, covered in filth. Every time I tried to climb out, the walls were too slippery to grip. I would fall, again and again, each time feeling more defeated. I had fought in literal war zones, relied on my training and strength to get me through...yet neither could help me in this fight."*

Thankfully Carlo did find a new life purpose but too many don't. In Australia men account for 77% of suicides - within the veteran community, it's even higher.

*"For me...the meaning of ANZAC Day has only deepened over time. Because I now understand this truth: Not everyone who comes home, truly comes home. That understanding has given me a greater sense of compassion, and a deeper appreciation for life. Each of us has a sphere of influence. Each of us has a choice - to uplift, to support, to notice, and to remember."*

Thank you to the Sub-Branch members for their organisation and to the volunteers dishing up a great Gunfire Breakfast.

Lest we forget - Paul Johansen & Kerry Scambler, Co-Editors.

(Read Carlo Novak's full 2026 ANZAC Day address at [southarm.tas.au/south-arm-rsl-sub-branch](http://southarm.tas.au/south-arm-rsl-sub-branch))



**How well do you know your local?** **SOUTH ARM Community Centre**

Your centre is full of discoveries:

- A fabulous Op Shop - most items just \$2.
- A meticulously kept, wide-ranging library.
- Your local history to uncover.
- A peaceful garden to relax in.
- And more...

Open 10-12 Mon, 1-3 Fri, 1-3 Sat

MAURICE POTTER *History Room* SOUTH ARM PENINSULA

IRON PLOT COMMUNITY GARDEN

SOUTH ARM COMMUNITY LIBRARY

POT OF LUCK Op Shop ladies, mens & kids clothes & accessories

9 Calverton Place | [commcentre@southarm.tas.au](mailto:commcentre@southarm.tas.au) | 0407 875 460

**1800 98 44 34**  
A Tasmanian Lifeline

A Tasmanian Lifeline is a telephone support service from [Lifeline Tasmania](http://Lifeline Tasmania) specifically for Tasmanians. If you need someone to talk things through with, or just need someone to listen, we're here.

**8 am to 8 pm, 7 days a week, 365 days a year**

**John Paul II CATHOLIC SCHOOL**

Your local Catholic Primary school

*'Inspired learning in a wonderful school community'*

Private school bus servicing the South Arm Peninsula

Before and After School Care

Early Learning Centre for 3-5 year olds

Located in the heart of Clarence Plains, Rokeby

Enquiries: Ben Morgan | Principal  
03 62477104 | [johnpaul.tas.edu.au](http://johnpaul.tas.edu.au)

**bta**  
TIMELY TAX & ACCOUNTING

Pushed for time?  
Need an **EFFICIENT, AFFORDABLE** and **EXPERIENCED** service?  
Look no further.

Timely Tax & Accounting can cater to all your Tax, BAS, Bookkeeping and Financial Statement needs.

**Tax Returns** from as little as \$80.

Drop in on your way home!  
Call for an appointment **6248 8536**

Office: 1544 South Arm Road, **Sandford**

**COREENA NORRIS - 0417 549 521**  
[coreena@timelytaxandaccounting.com.au](mailto:coreena@timelytaxandaccounting.com.au)

**PETER BLACK - 0400 049 282**  
[peter@timelytaxandaccounting.com.au](mailto:peter@timelytaxandaccounting.com.au)

**FITNESS IN THE PARK**

**South Arm Oval**  
**Thursdays**  
**9.30am - 10.30am**

Free fitness for all ages until 2 October 2026

Find out more  
[ccc.tas.gov.au/fitness](http://ccc.tas.gov.au/fitness)  
or call 6217 9500

City of Clarence

## Peninsula Memories – school life 1978-1988

We hope you've been enjoying the series of Peninsula Memories so far. It's certainly prompted many wistful comments like "Oh, I remember that" or "How did they get away with that?!" This edition introduces a new era.

A chance introduction to **Mrs Bernice Archer, principal of South Arm Primary School from 1978-1988**, led to an enjoyable chat and looking through some photos. Bernice spoke of introducing sport, camps away, the shed (now gym), the environmental projects, the painting of the old mural and many other activities which expanded the students' horizons. None of which she said could have been achieved without support from teachers, assistants and particularly "those wonderful parents".

Bernice, now in her 90s, still follows many of her former students and keeps in contact with parents too. She said South Arm Primary was her favourite school experience.

This is clearly a chapter of our local history deserving a deeper dive so, if you were at SA Primary as a student, teacher, assistant or had children/grandchildren there during those years, we'd love to hear your memories and thoughts on school life. Please get in touch.

- Kerry Scambler, SAPRA President, [0407 875 460](tel:0407875460) | [saprapres@southarm.tas.au](mailto:saprapres@southarm.tas.au)



## Relationships shine at South Arm Primary School

South Arm Primary School recently participated in an **External School Review (ESR)**, providing a valuable opportunity to reflect on our work and celebrate our ongoing commitment to student learning and wellbeing. The review highlighted the strong, positive relationships between students, staff and families, which underpin a supportive and inclusive school culture.

Reviewers noted the dedication of our staff to delivering high-quality teaching and creating engaging learning experiences that support every student to succeed. The ESR also identified areas for continued growth. These priorities will guide our next steps as we continue to improve outcomes for all students.



One area we are particularly proud of and feeling extremely lucky to have are the collaborative efforts of our whole school community. **The reviewers said "Community volunteers, the South Arm Peninsula Residents Association, the School Association, the South Arm pharmacy, store, café, and church, the RSL and Uniting Care and the Lindisfarne Opportunity Shop are integral partners of the school – noted by all as invaluable"**. It was also noted the amazing commitment of our local community member volunteers.

Together, we look forward to building on this work and continuing to provide the best possible education for our students.

- Carla Brown, Principal - South Arm Primary School | [6239 9126](tel:62399126)



**If you're experiencing issues securing appropriate aged care services on the South Arm Peninsula, we'd like to hear from you.**

In order to advocate for better access, reliability and quality of support in our region, we need to understand the difficulties residents may be experiencing in accessing reliable home help, domestic assistance, nursing and maintenance services.

If you'd like to share your experience, please call SAPRA committee member, Jacqui Stevens, on [0407 994 985](tel:0407994985) to discuss in strict confidence.



## South Arm Markets

Great feedback from folk I met who had not visited the market for some time saying it's amazing and marvelling its growth.

**April:** Featured three stalls for collectors kept busy with those researching and collecting coins, Pokémon cards and Pikachu as well as a variety of Korean collectibles. Damon Thomas is a regular with his eclectic antique collection.

The hall always stocks premium hand crafted goods including bags, socks, baby bibs and beanies. I was invited to get up close and tactile with the leather handbags featuring owls and cats and other animals.

**May:** The last until spring, so market goes stocked up on Jacqui's fare for the winter. Canine friends were not forgotten with doggie cakes and other treats.

Food alley was 'going off' with Mexican, Persian, dumplings, Italian, loaded spuds and for those with a sweet tooth, icecream. Nearby you could even have your kitchen knives and secateurs sharpened whilst you dine!

Stallholders - please keep crafting busily over the winter so we can buy up big in Spring!

- A Market Musketeer

PS Don't forget the Op Shop, which still opens Friday and Saturday 1- 3pm and Monday 10- 12pm.



**SWITCH TO AN ENERGY EFFICIENT WATER HEATER & SAVE!**

Save up to **65%** on your water heating bills.

WITH A MIDEA HEAT PUMP



[6273 1577](tel:62731577) | [parrair.com.au](http://parrair.com.au)

# Cremorne Corner



## Cremorne Bowls and Community Club



### Autumn working bee

Apologies that we needed to postpone. We were still waiting to hear back from Council for the go ahead concerning funding for our yearly events. We will aim to reschedule for June/July and confirm the date via Face Book and the Big Yellow Sign.

### CPR Training for Cremorne volunteer youth

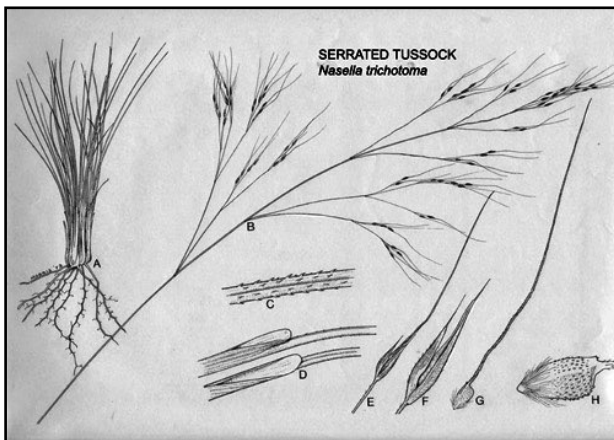
We are all set for CPR training on Sunday 14 June for our youth 14 – 18 years old.

This is through Federal Government Funding via our MP Julie Collins. Thanks to the Cremorne Bowls Club for volunteering their space for us to hold this important activity.

### Serrated Tussock

With the ongoing dry, this invasive pest is quite easy to spot, often looking green whilst other native species have browned off in the summer months. Cremorne unfortunately has the reputation of harbouring a huge population of this Weed of National Significance (WONS) which also has the dubious title of being a declared weed in Tasmania.

In spring when it flowers it has a distinctive purple head. Please get to know how to identify and chip out any tussocks that appear on your land or out on the nature strip.



- The Coastcare Team 0408 121 304 | Facebook | pipeclaycoastcare@outlook.com

### Small Club of the Year Award Nominee

The finalists for Bowls Australia's (BA) 2026 Awards Night have been announced with a plethora of stars among the nominees ahead of June 13 on the Gold Coast.

Cremorne has the honour to be recognised and shortlisted alongside Victoria's Anglesea Bowling Club for the Small Club of the Year Award.

This recognition reflects the hard work, passion, and community spirit of everyone involved in our club – from our dedicated community, volunteers and members to our supporters and sponsors. Thank you for being part of what makes our club so special.

We're excited to be part of this celebration and look forward to the awards night in June.

- Alex Barber, President

### June Calendar

Monday evenings: Yoga

1 June: Board meeting

5 June: Food van – Spiced on Wheels (Indian)

14 June: CPR Course (with Coast Care)

19 June: Food van – Ember Box Pizza

The above is subject to change. Follow our upcoming events schedule at [cremorne.bowls.com.au/upcoming-events-functions/](http://cremorne.bowls.com.au/upcoming-events-functions/)

CPR Course Sun 14 June  
Cremorne Bowls Club  
for 14-18 year olds



Regular at the Bowlo

CB&CC Bar Tue-Sat, 4:30 – 7:30PM

Thursday Bowls

Details: [cremorne.bowls.com.au](http://cremorne.bowls.com.au)

See our food van schedule at [cremorne.bowls.com.au/upcoming-events-functions](http://cremorne.bowls.com.au/upcoming-events-functions)

**AED** Automated External Defibrillator

**AVAILABLE 24/7**  
Calverton Hall  
South Arm RSL & Community Club  
Clifton Beach Surf Life Saving Club  
**ALWAYS RING 000 FIRST**  
Codes registered with Ambulance Tas

**GRANDPOOBA**  
Septic Tank Pumping  
  
Phone Adrian  
**0418 955 195**

## Calverton Hall - Your local event venue

Did you know that the hall, tennis court and oval are all managed by a volunteer committee of the South Arm Calverton Hall Association on behalf of the community and available for us all to use?



**Planning a private event?** Look no further! Call Anita to find out more.

### Regular activities:

**Carpet Bowls Mon 1-3pm | Craft 2nd, 3rd, 5th Tue monthly  
Boxing Tue 5:30-6:30pm | Bridge Wed 2-5pm**

See page12 for more details on activities and tennis court bookings.

**Association Membership** is just \$2 membership per person. By joining you're showing support for the committee's work and continued care for our local hall. Renew/join by 1 July, forms at the hall and from [southarm.tas.au/Calverton-hall](http://southarm.tas.au/Calverton-hall). Payment details on form.

Thank you for supporting our community spaces! For all general or membership enquiries email us at [calvertonhall@gmail.com](mailto:calvertonhall@gmail.com)

- Anita Carlin, President, South Arm Calverton Hall | [0415 512 661](tel:0415512661)

## South Arm Community Pharmacy

SOUTH ARM COMMUNITY PHARMACY



The **RSV (Respiratory Syncytial Virus) vaccine** is now fully subsidised for people aged 75 years and over, and 60 years and over for Aboriginal and Torres Strait Islander people. Book an appointment with us to receive your free vaccination. We are still providing flu, COVID and catch-up vaccinations.

### Our opening hours have changed

**Monday-Friday 9am-5pm | Saturday 9am-12pm  
Sunday and Public Holidays – CLOSED**

As we come into winter and illness strikes, don't forget we can discuss absence certificates with you.

- 3120 South Arm Road, South Arm | [6239 9529](tel:62399529)

## FESTIVAL OF VOICES

### South Arm Sings @ Calverton Hall

**6.30 pm, Friday 3 July**

Join our much-loved choir leader and respected professional musician Betsy Hanson in a community celebration of song and local talent.

The **South Arm Songsters** will be joined by Fake Snake Pancake, Lisa and her family band, That 80's Trio, the Kitchen Table Collective and the (very) new Calverton Hall Choir.

Members of the audience will also be invited to take the stage for a song. **Come along for a night of harmony, connection and local talent for all ages and abilities.**

More details here:

[www.festivalofvoices.com/events/2026/south-arm-sings](http://www.festivalofvoices.com/events/2026/south-arm-sings)

### Supported by



City of Clarence



Rosny Farm

## Crowy's Excavations

- 1.8 / 3.5 / 5.5 tonne excavators with Auger's and Rock Breaker
- Tip Truck hire

**Contact Pete  
0417 051 537**



Fully insured local with over 10 years' experience

ABN 31 175 092 923



Local agent with sound knowledge and understanding of today's market located in central Lauderdale.

**Contact Deb Dilger  
0417 103 891**

456 South Arm Road, Lauderdale  
6248 7666 [fall.com.au](http://fall.com.au)



**LAZENBY  
SAND  
PTY LTD**

## We are open Saturdays!

from 8am – 4pm

### We sell direct to the public!

All our products are available by the bag, ute, trailer, and truck load.

We also have a courtesy trailer available and **we deliver!**



### SWAP'n'GO

8.5kg or 3.7kg gas bottles available at our site today!

**Come see our extensive range of soils, gravels and mulches today!**

**Trading Hours**  
Monday to Friday 8am – 5pm  
Saturday 8am – 4pm  
Sundays & Public Holidays CLOSED



SENIORS CARD  
welcome here

**South Arm Road, Sandford**  
Located 3km past Clifton Beach turnoff

**Ph 6248 9097**

**"YES, we deliver!" • EFTPOS • find us on fb.me/lazenbysand**

## Storm Bay - more than a name on the map



After winning a philanthropic grant **Friends of the Bays** is running an innovative project in June. We have chartered the Cuttlefish, a tourist and function boat, and are heading out to Storm Bay for the day. Our interesting list of invitees includes artists, naturalists, story tellers, photographers and film-makers, and musicians.

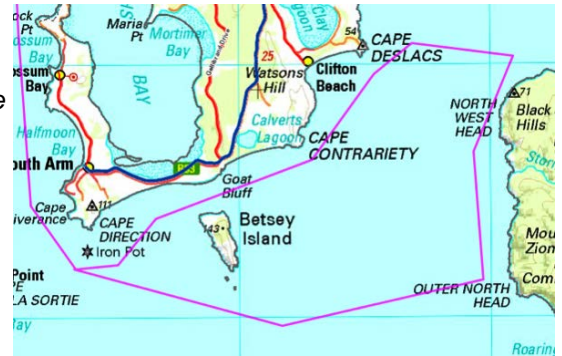
Our cruise will be taking them to see parts of Storm Bay that most people only know from a map, if at all, and our goal is to showcase this area, and make it better known, in line with Sir David Attenborough's advice:

*"No one will protect what they don't care about; and no one will care about what they have never experienced"*

We hope that this experience will be inspiring to our creatives, and that they can help spread the word. In 2027 we plan to run an exhibition featuring works, images and words informed or inspired by Storm Bay.

In the longer term we hope to persuade that there is a better future for Storm Bay rather than having another 50 or more fish pens, and all that entails, in this area, our backyard.

- Ian Sale, Secretary, FotB | [Facebook](#)



## Pipe Clay Lagoon — What's happening here?

Pipe Clay Lagoon is full of wild oysters. Not the farmed ones - the feral ones that have been escaping the leases for fifty years, building dense reefs along the rocky shoreline and out in the lagoon. In 2023, Oysters Tasmania hauled out 50 tonnes in one go (almost three Metro buses' worth) and barely made a dent.

You've probably noticed the thick green seagrass that wasn't there a few years ago - it's part of the same story. All those oysters - farmed and feral - have spent fifty years filtering the water and making it clearer. Clearer water means more sunlight, which means more seagrass. Now there's so much of it that the oxygen level crashes overnight beneath the dense beds and the commercial oysters can't survive in it.

The 2016 POMS virus, warmer summers, and infection finished the farm off. By early 2025, every commercial lease in the lagoon had gone quiet. The wild oysters, though, are still thriving.

A few of us are working with the regulator, industry, and local groups on what the lagoon becomes next. Follow along - or roll up your sleeves and learn more at [thelagoon.au](http://thelagoon.au).

- Russell Miller, Cremorne



## The Store Opossum Bay

There's a new buzz at the OB shop with Al Derham taking over the lease, refreshing the food and beverage menus and re-organising general store stock.



Al previously lived in the area so is no stranger to the community. For him it's all about the locals and providing a convivial place for them to connect. He's supporting local producers by stocking items appealing to visitors as well as sharing information on local groups and activities.

Al's also keen to introduce some different offerings - he already has vintage bicycles for hire so stay tuned!

Welcome back to the Opossum Bay/South Arm community Al!

Open: 7am-7pm Mon-Fri | 7.30am-7pm Sat | 8am-7pm Sun  
Ph: 6239 9134

2 Pier Road, Opossum Bay

Email: [thestoreopossumbay@gmail.com](mailto:thestoreopossumbay@gmail.com)

FB: [www.facebook.com/thestoreopossumbay](https://www.facebook.com/thestoreopossumbay)

## Safety Reminders South Arm Volunteer Fire Brigade



**Hazard Reduction:** Now is the ideal time to reduce hazards around your home but please remember if doing some burning off **register** via the [myServiceTas Portal](#) or by calling 1800 000 699

**Lithium-ion Battery Safety:** They are highly flammable and can catch fire:

- **Don't** overcharge
- **Don't** use a charger that doesn't meet Australian Standards
- **Don't** store somewhere very hot
- **Don't** use if damaged
- **Don't** use if faulty



If a battery or device is smoking, flaming or melting, get out, stay out and dial Triple Zero (000) immediately!

- Cliff Munday, 2nd Officer,  
South Arm Fire Brigade | 0476 015 911

**Never the time to get things done?  
Give Your Other Fella a call**



**YOUR OTHER FELLA  
HANDY SERVICES**

**Stu-0475 282 817**  
[yourotherfella@gmail.com](mailto:yourotherfella@gmail.com)

**For even the smallest  
home maintenance jobs** **Sandford**

**Tim Holton**  
BUILDER / CARPENTER

- Decks
- Bathrooms
- Renovations
- Smaller Projects

**0408 996 176**

## Scholarship assists local students

The newly branded South Arm RSL & Community Club was delighted to present not one, but two Student Scholarships to young local residents.

Club Vice President, Mark Green, presented the awards saying "The Club Committee could not separate the applications from Grace Munday and Lucas Kreiner who have both started their first year of a Bachelor of Biomedicine."

Grace said "The funds will help me focus on my studies, rather than financial stress, to make the most of my first year." Lucas will be using the scholarship to "make the most of opportunities through my degree, without juggling as much part time work."

Grace and Lucas will each receive \$3,000 to assist with their study costs and we look forward to seeing the path these young people take, driven by their deep desire to help others. Photo: L-R Lucas Kreiner, Mark Green & Grace Munday.



**LIVE MUSIC**

**Velvet Divan**

2-5pm  
Sun 5 July  
Free entry



**Saturday dining options**

**À la carte**  
June 20 & 27, July 4, August 8 & 22

**Special Events**  
Seafood buffet - July 11 & 25, August 15  
Christmas in July - 18  
Pizza, Pasta & Schnitzels - August 1

**BIG FREEZE 12**

MONDAY 8 JUNE

**SPIT ROAST \$25**  
12.30pm - bookings essential  
Dress in your team's colours  
- prize for best dressed!

**FIGHT MIND**  
IT TAKES PEOPLE  
ALL PROCEEDS TO MIND AUSTRALIA

**ICE BUCKET CHALLENGE**  
NOMINATE, DONATE AND WATCH  
THE FUN & FUNDS!

## St Barnabas hosting the Winter Festival

St Barnabas is excited to be hosting this year's Festival. Weekly workshops are to be held in the church hall on Saturday mornings, with a wide range of interesting and informative sessions led by local artisans and experts.



The **Festival launch will be on Saturday 6 June** at St Barnabas hall. "Mrs Marsh" will hold a knitting workshop, and a delicious morning tea will be provided. Everyone is welcome to come along and be a part of this community event. During the South Arm market winter break, these events will provide community focus and will help to raise much needed funds.

**Church Garage Sale on Saturday 27 June 10am – 2pm**, with bargains galore and a tempting and warming morning tea. Come along and enjoy this event.

**Services:** Reverend Beverley Elliot officiated at a beautiful service to honour and remember Mothers on Mother's Day. The church was filled with photographs of our dear Mums and many stories were shared. Please make a note of this annual celebration, it is certainly a special way to acknowledge our Mums.

Our **weekly Sunday morning service starts at 10am**. Everyone is always welcome to come along and find peace and hope.

- Linda Roe | [www.stbarnabas.au](http://www.stbarnabas.au)

**Winter Festival Program**

<p><b>June</b></p> <p>6 – Opening; Knitting workshop; morning tea 13 – Rock painting 20 – Felting 27 - Giant garage sale 10am-2pm</p>	<p><b>July</b></p> <p>11 – Dot painting 18 – Felting 25 – Native plant propagation 10am-2pm</p>	<p><b>August</b></p> <p>1 – Herb garden planting 8 – Church book sale 15 – Seed sowing - Spring planting 22 – Bird photography 29 – "Hymn-a-long" St Barnabas Church – 2pm.</p>
---	---	---



SOUTH ARM PENINSULA

**MEN'S SHED**

**GARDEN STAKES**

Recycled treated pine  
**\$1.50 ea (with point)**  
**\$1.00 ea (no point)**  
approx 1500mm long, 20mm square

0439 202 822  
[mensshed@southarm.tas.au](mailto:mensshed@southarm.tas.au)

Order/collect from the Shed - Wednesdays 9-1  
2972 South Arm Road



for all your

**TREE REQUIREMENTS**

felling, trimming, removal etc.

**Ron Suris**

**0418 122 735**



## Mens' Shed Quiz Night a Huge Success!

On 2 May 2026, the SAP Mens' Shed (SAPMS) hosted a successful Quiz Night that brought together community members for an evening of fun and friendly competition. Thanks to our hard working volunteers for organising the event, prize donors and those who attended. Photo: Ian Sale (centre), receiving his winner's certificate for the second year in a row!

**Looking ahead, SAPMS will soon have a working bee to build saw horses.** We will also be helping Tasmania's Bee Queens improve their skills on hand tools. The dates of these and other events will soon be posted on our Facebook page.

Remember, **our doors are open from 8:30am to 12:30pm on Sundays, Mondays and Wednesdays.** We welcome current and new members and those who want to find out more.

- Kipling Walker, Communications Officer | [mensshed.southarm.tas.au](http://mensshed.southarm.tas.au) | [Facebook](#)



## Clifton Beach SLSC

Another massive season at the club comes to an end! It is a shame to see summer pass but it has been another very enjoyable season full of plenty of highlights and memories. Most importantly as a surf life saving club, **we ensured visitors to Clifton Beach were safe** throughout the summer thanks to the incredible efforts and commitment of our patrolling members - no fatalities, multiple rescue and first aid events and numerous preventative actions.

The club continued to enjoy surf sports success with our **Senior Team** (photo) winning the **Open State Title** with both the outright points and handicap titles. This follows on from the success of our Junior Team also winning the State Title a few weeks earlier.

The club continues to be rescue ready with our Emergency Rescue Team available 24/7 throughout the colder months.

Major priorities coming up include **the club's AGM which is to be held on Sunday the 26 July** and also progressing with the planning for our club house upgrade. We also continue to work with stakeholders to have the installation of remote rescue tubes at Clifton Beach completed.

We thank the local community at Clifton Beach and South Arm area for the tremendous support over the summer and we look forward to assisting the community and continuing to build our partnerships in the months and years ahead.

- Matt Clingeffer, President



## South Arm's Graeme Prowse shares his story and skills

Graeme has become a popular figure in the community since moving to South Arm from Redland City, Queensland, with his wife Kaye, in 2023. Many, including myself, who enjoy his company at the Mo Cafe, knew little about this mild-mannered gentleman other than he had a connection to the boxing world. Everyone has a story to tell and Graeme's is one of great achievement and dedication to the sport.

In over 50 years competing at schoolboy, golden gloves, state and regional level, Graeme was also a major figure in the Redland Amateur Boxing Association for over 30 years and has trained state and Australian champions, been a national coach and taken teams to international competitions.

In 2016, approaching 60 years of age, Graeme won a World Masters Boxing Championship title in Lenexa, Kansas City U.S.A. - an achievement recognised by the Redland City Council with a Certificate of Achievement Award. (Photo: Redland City Bulletin)

A few years older now, Graeme is easily recognisable unless hidden under his Guinness cap. Graeme volunteers in the community and delivers boxing classes at Calverton Hall.


- Paul Johansen, SAPN Co-editor



### Boxing Class

Exercise for mind and body.

Calverton Hall, South Arm  
Tue 5:30-6:30pm - \$10 - Ages 10+.  
Call Graeme 0418 874 667



**SANDFORD  
ELECTRICAL**

- Residential
- Commercial
- Maintenance

**Dylan Grubb**  
**0400 132 725**  
sales@sandfordelectrical.com.au  
sandfordelectrical.com.au

**SOUTH ARM  
PENINSULA  
Community Bus**

**SOCIAL SUPPORT**  
Fortnightly shopping trips (\$8 person),  
and other assistance available.  
*Particularly for those unable/uncomfortable to drive.*

**SOCIAL CONNECTIONS**  
Families | Friends | Common interest groups  
*Keep your group together on the journey.  
Enjoy their company and forget the hassle  
of driving/parking!*

**Enquiries: Steve - 0419 339 415**  
communitybus@southarm.tas.au  
www.southarm.tas.au/community-bus



**South Arm Community Centre**  
1<sup>st</sup> Tuesday of the month  
Doors open 7pm at 9 Calverton Place, South Arm

- 15 games per session
- Each game costs \$1 to play (\$15 total)
  - Cash prizes
- Tea, coffee, chips & chocolates available to buy
- BYO nibbles & drinks (alcohol included)

ADVERTISEMENT

**Sarah Lovell MLC**   
 Labor Member for Rumney

**Your voice in Parliament**



P: (03) 6212 2330  
 F: SarahLovellLabor  
 E: sarah.lovell@parliament.tas.gov.au

**Labor** Tasmanian 

Authorised by Sarah Lovell, 1/33 South Arm Rd, Rokeby

## Update - History Room Rejuvenation

If you've visited the South Arm Community Centre in recent months, you might have seen our plans to create new themed displays to better showcase our local history. Using the work of the late Maurice Potter as a base and resource, we're researching and uncovering even more stories, images and artefacts.

We've started by focusing on the (playground) end wall to produce four major displays, supplemented by smaller information panels. Further information will be available on the desks and on file for those who would like to dig a little deeper into our peninsula history. These displays are based around:

1. First European Settlement
2. The Gellibrand Story
3. Early Farms and Farmers
4. Peninsula Produce

This content is currently under review and being checked for accuracy before printing. The next phase will be planning content for the hall wall.

In parallel, we continue to work on collecting more stories, memories, images and physical artefacts. If you have a part of our history you'd like to share and preserve please email:

[history@southarm.tas.au](mailto:history@southarm.tas.au) or [saprahist@gmail.com](mailto:saprahist@gmail.com)

We'd love to hear from you.

Below is a virtual view of what the end wall will look like. Comments, feedback and any assistance will be very welcome.

- *SAPRA's History Room Rejuvenation Team*

ADVERTISEMENT

**JULIE COLLINS MP**

**If you require assistance on any Federal matter please contact me.**



T: **6244 1222**  
 E: Julie.Collins.MP@aph.gov.au  
 W: [www.juliecollins.com](http://www.juliecollins.com)

A: 18 Ross Ave (PO Box 38)  
 Rosny Park TAS 7018

**Labor** 

Authorised by Julie Collins MP, ALP Tasmania, 18 Ross Avenue, Rosny Park TAS 7018.



Above: a virtual view of the History Room end wall displays

## SAPRA MEMBERSHIP - valid to 30 June 2027

Payments can be made in cash or by EFT - see details below - \$2 per person



Name(s)

Address

Phone  Email

Date  \$2 pp (+ donations welcome!) Amount enclosed  \$

**Cash payments:** please leave form + payment in an envelope at the South Arm PO, addressed to SAPRA.

**EFT payments:** BSB: 633000 | Acc: 180823684 | Ref: Membership YOUR NAME  
 then email [SAPRAMembers@southarm.tas.au](mailto:SAPRAMembers@southarm.tas.au) advising payment and details as above (name, address etc.).

*Thanks for showing your support for our community work and facilities!*

## Local services & notices

Free service for Peninsula businesses. If you know of any listing no longer active please let us know - [editor@southarm.tas.au](mailto:editor@southarm.tas.au)

### Accommodation

#### Cremonne Self Contained Cabin

Great rural location, close to beach. [0434 499 730](tel:0434499730) | [www.airbnb.com/h/cremonne-trinity](http://www.airbnb.com/h/cremonne-trinity)

### Administrative Services

#### Justice of the Peace

##### Opossum Bay

David Skegg [0418 374 305](tel:0418374305) | [davidskegg@icloud.com](mailto:davidskegg@icloud.com)

##### Justice of the Peace

Doc. witnessing, court affidavits, stat. decs, certifying true copy of original document. Terry Roe [0400 140 870](tel:0400140870)

### Animal services

#### Sandford Cat Hotel

5 star luxury for your cat. Hazel Jones [0403 568 999](tel:0403568999)

#### Jim's Dog Wash - Sandford

Passionate about pampering your pup. Groom, wash, nails & ears, desensitisation Vivien [0423 289 199](tel:0423289199)

### Automotive

#### Tilt tray towing, accident recovery, insurance work.

Anthony [0412 110 992](tel:0412110992)

### Beauty

#### Jewellery

Handmade precious jewellery designed & made in South Arm. Gavin [0414 629 185](tel:0414629185) | [www.gavinmacsporran.com.au](http://www.gavinmacsporran.com.au)

#### Mj's Hair Design

Fully qual. hairdressers, facial waxing/tinting. 3120 South Arm Rd, Wed to Sat, or by appt. [6239 9612](tel:62399612) | [0421 859 408](tel:0421859408)

#### Mobile Haircuts

Professional haircuts in your home. Tania [0458 528 258](tel:0458528258) | Facebook.

#### South Arm Skin Care

Qual. beauty therapist (19+ yrs). Mj's hair design, 3120 South Arm Rd. Wed-Sat. [0409 552 869](tel:0409552869) | Facebook.

### Ceremony

#### Oakdown Celebrant

Naming days, weddings & more. Make your day unique. Tara Bellette [0408 367 932](tel:0408367932) | [tarabellette76@gmail.com](mailto:tarabellette76@gmail.com)

#### Lyn Gallagher, Marriage Celebrant

Weddings, Naming Days, Renewing of Vows, Special Birthdays, Funerals. [0459 769 419](tel:0459769419) | [hopefulandtrue@gmail.com](mailto:hopefulandtrue@gmail.com)

#### Marriage & other Life Event Celebrant

Saying I do? Let me be your guide - Beverley Elliot. [0460 519 037](tel:0460519037) | [beverleyfe@gmail.com](mailto:beverleyfe@gmail.com)

### Money matters

#### Synergy Finance

Your local partners for home and business lending. [0488 934 270](tel:0488934270) | [jarrad.clark@synergy-finance.com.au](mailto:jarrad.clark@synergy-finance.com.au) | [www.synergy-finance.com.au](http://www.synergy-finance.com.au)

### Community meetings & activities

#### Pottery Classes

Laney the Clay Lady. Children, adult and group workshops - small, large and corporate team building events. Ph [0468 388 560](tel:0468388560)

#### Bible Discussion - Connect Group

New members welcome. Fridays 10.30am. in Gellibrand Fellowship Hall at St Barnabas Church. Jane Beavan [6239 9244](tel:62399244)

#### Iron Plot Community Garden @ the Centre

Help garden, have a chat and/or help plan - Fridays 10-11am. Open for all the community to enjoy.

#### Pizza Oven @ Community Garden

BYO wood, oven tools available by arrangement. Free to use but donations to the Community Garden welcome. Ph [0407 875 460](tel:0407875460) to book.

#### Cremonne Community Group Inc

[www.cremonne.tas.au](http://www.cremonne.tas.au) | Facebook [cremonnecommunitygroup@gmail.com](mailto:cremonnecommunitygroup@gmail.com). Marquee hire for CCG members [ghr@pipshy.com](mailto:ghr@pipshy.com) | [0412 305 794](tel:0412305794)

#### Bridge

Calverton Hall, Wednesdays at 2pm. New members and beginners welcome. Noela [0418 600 707](tel:0418600707)

#### Bingo

7pm, first Tuesday monthly @ the Community Centre. Lots of fun!

#### Craft Group

2nd, 4th & 5th Tues of the month 12:30-3pm, Calverton Hall. \$4/session. Lesley Gore [6239 9321](tel:62399321)

#### Rokeby Girls' & Boys' Brigades

Adventure for girls & boys 5-18yrs. Thu 5:30 - 7:30pm, at Emmanuel School. Libby [0416 277 101](tel:0416277101) | [eneduljee@gmail.com](mailto:eneduljee@gmail.com)

#### Sandford Scout Group Friends

Fun, community service and adventure! Joey Scouts (5-7 yrs) Mon 5-6pm, Cubs (8-11 yrs) Mon 6.15-7.45pm Scouts (11-15 yrs) Wed 7-9pm Susanne | [sehovington@hovo.id.au](mailto:sehovington@hovo.id.au)

#### SAPRA Committee Meeting

2nd Tue of the month, 7pm at South Arm Community Centre. To address the Committee, please contact the President (see P2).

#### South Arm Community Centre Library, Op Shop & History Room

9 Calverton Place, South Arm Mon 10am-12pm, Fri & Sat 1pm- 3pm Market days 9:30am-1pm.

#### St Barnabas Community Church

Morning service, Sun. 10am. W/bee 10am, 1st Sat./month. |Rachel Todd, [6239 9706](tel:62399706) | Jane Beavan [6239 9244](tel:62399244).

### Exercise & activities

#### Cremonne Bowls Club

[www.cremonne.bowls.com.au](http://www.cremonne.bowls.com.au) 6248 9856

#### Indoor bowls

Every Monday 1:30- 3pm Calverton Hall. Beginners always welcome!

#### Evolve Fitness

Tue & Thu 5:30pm, Sat 8am. Sandford Community Hall .First Class Free. Susan [0488 707 056](tel:0488707056) | Facebook | [evolvefitnessaus@gmail.com](mailto:evolvefitnessaus@gmail.com)

#### Jayne Martin Yoga

Slow gentle flow suitable for beginners. For more info, contact [jaynemartin04@gmail.com](mailto:jaynemartin04@gmail.com)

#### Pilates - South Arm

Contact Helen on [0498 177 916](tel:0498177916)

#### South Arm Fitness & Wellness Hub

Gym open 24/7. \$14 /week, no lock in contract. Yoga 9am Mon. Laura [0421 859 408](tel:0421859408)

#### Tennis Court

\$10/hr. Book at South Arm Store or a/h David [0408 735 802](tel:0408735802) or Lesley [03 6239 9321](tel:0362399321)

#### Yoga at Lauderdale Hall

Strength & calm Asana, pranayama, Yoga Nidra & meditation. Wed 10.30-12pm. Margaret [0428 252 560](tel:0428252560)

### Food & dining

#### The Store Opossum Bay

Open 7 days. Great coffee, fishing, takeaways, groceries, tools, cards, petrol & friendly service. [6239 9134](tel:62399134)

#### South Arm RSL & Community Club

Great meals, take-away, bottle shop. Dinner 7 days + lunch on Sun Pizza - Fri/Sat; Asian - Sun/Mon/Tue/Thu. A la carte Wed/Fri/Sat. ph [6239 9171](tel:62399171)

#### Touch of the MO Cafe

Mon & Tue Van 8am-2pm Wed - Sun Cafe 8:30am-3:00pm. Brunch, Chef's specials, snack menu, coffee cafe smoothies and more. Phone [6295 5532](tel:62955532) | Facebook.

### Gardening

#### AJs Lawnmowing & Maintenance

6 Calverton Place, South Arm. Call Andrew for a free quote [6239 9863](tel:62399863) | [0422 992 479](tel:0422992479)

#### Last Straw Garden Supplies SA

Pea & barley straw, horse/sheep/chicken manure, potting mix & organic compost. Free local delivery. Adrian [0427 976 618](tel:0427976618)

#### Landscaping, General Gardening

Develop new gardens rejuvenate old, lawn mowing rubbish removal etc. Steve [0408 000 645](tel:0408000645) [sbishtas@gmail.com](mailto:sbishtas@gmail.com)

## **Worm poo and worms**

Natural magic food for veg & plants. \$5 bag poo \$10 bag worms. Free local del. Jill [0419 732 390](tel:0419732390)

## **Horticulture**

### **Consultant Horticulturist**

Plant, weed + disease identification; plant specification; plant propagation + sourcing. Dr Catriona McLeod, [0400 274 363](tel:0400274363) [contact@catrionamcleod.com](mailto:contact@catrionamcleod.com)

## **Home & property**

### **Activ8 Electrical & Data Contractor**

Commercial & residential. Michael Calabrese [0407 281 383](tel:0407281383) | [www.activ8electrical.com.au](http://www.activ8electrical.com.au) | [activ8electrical@gmail.com](mailto:activ8electrical@gmail.com)

### **Blakey's plumbing and maintenance [after hours]**

Domestic plumbing, blockages & repairs. Robert [0410 118 254](tel:0410118254)

### **Construction & Carpentry**

For all your building requirements. Simon [0405 936 652](tel:0405936652)

### **South Arm Home Maintenance**

Retired carpenter for doors, plaster, painting, decks etc. Rohan [0424 644 451](tel:0424644451)

### **Flatrock Concrete**

Formwork, concrete & excavations Justin [0439 915 386](tel:0439915386)

### **House-sitter Clare**

Experienced, reliable, mature & local. Excellent references. [0450 417 061](tel:0450417061)

### **Interior Design**

DIY consultations, new build & renos. Free discovery call. Kellie, Hello White Interiors [0421 972 370](tel:0421972370)

### **Reptile Ranger**

Rescue & relocate snakes correctly. Permit 2001766. Craig [0424 441 488](tel:0424441488)

### **Rockstar Tiling & Bathroom Renovations.**

Waterproofing, tiling & bathroom renovations. Servicing Peninsula & Eastern Shore. Rick [0499 279 561](tel:0499279561)

### **Snoopy's Gas Fitting**

Install, service and maintain. Brett Newell [0499 560 929](tel:0499560929) | [sssnoopy11@gmail.com](mailto:sssnoopy11@gmail.com)

### **Snake Catcher & Re-Locator**

Registered. \$70 call out fee. Lauderdale, Sandford, South Arm [0411 511 769](tel:0411511769)

### **Tassie handyman**

Maintenance, carpentry, painting, fencing, small l/scaping, windows & doors. [0448 667 732](tel:0448667732) | [Facebook](#)

### **Tim's Building and Maintenance**

Decks, bathrooms, renovations, etc. [0408 996 176](tel:0408996176)

### **Ion Electrical - Bryce Fletcher**

New builds and renos, switchboards, lighting, Starlink inst., EV charger inst. and more. Call Bryce [0457 378 388](tel:0457378388). [brycejfletcher@gmail.com](mailto:brycejfletcher@gmail.com)

## **Wicks Carpentry Services**

Qual. carpenter - repair works, renovations, extensions, new builds, heritage works. [0431 839 866](tel:0431839866)

## **Cleaning Services**

Regular residential cleaning, air bnb cleans, one off deep cleans. Contact Ella [0427 340 203](tel:0427340203) [ellagrwest@gmail.com](mailto:ellagrwest@gmail.com)

## **Heat Pump - service/installation\***

Mates rates.ARC Licence No. L186161. Contact Mark [0439 828 943](tel:0439828943) [mtr33434@bigpond.net.au](mailto:mtr33434@bigpond.net.au) \* conditions apply

## **Health Services**

### **Converse Online Speech and Art Therapy**

Building confident communicators. [0487 718 750](tel:0487718750) | [www.conversetherapy.com.au](http://www.conversetherapy.com.au) [admin@conversetherapy.com.au](mailto:admin@conversetherapy.com.au)

### **South Arm Community Pharmacy**

4/3120 South Arm Rd [03 6239 9529](tel:0362399529), Fax 03 6239 9600 [info@southarmpharmacy.com.au](mailto:info@southarmpharmacy.com.au) Mon -Fri 8.30am-5.30pm, Sat 9am- 12

## **Special Interest**

### **Genealogy Research**

Start your family tree or solve a mystery. \$50 initial review inc 2hrs research. Maree [0409 169 659](tel:0409169659) | [harriets.garden@bigpond.com](mailto:harriets.garden@bigpond.com)

### **Maurice Potter History Room**

SA Community Centre. Join the History Facebook group. [history@southarm.tas.au](mailto:history@southarm.tas.au) Michael Topfer [0400 416 099](tel:0400416099)

## **Transport & equipment**

### **SA Peninsula Community Bus**

Social support & connections. Group hire available - 11 seats + vol driver, tow bar. Steve [0419 339 415](tel:0419339415) | [communitybus@southarm.tas.au](mailto:communitybus@southarm.tas.au)

### **Wheelchairs and walker**

Short-term loans to SA RSL Sub-Branch Members and Defence Services personnel (and dependents). Ken [0418 298 202](tel:0418298202).

### **Community Transport Services Tasmania**

Community based, not-for-profit providing affordable shared door-to-door transport. Call My Aged Care [1800 200 422](tel:1800200422).

## **Venue Hire**

### **Calverton Hall & Oval Hall Hire**

Sarah [0459 240 084](tel:0459240084) TEXT ONLY. | Anita [0415 512 661](tel:0415512661). Tennis court after A/H Dave [0408 735 802](tel:0408735802) | Lesley [6239 9321](tel:062399321). Key and racquet hire available at the shop during business hrs.

### **South Arm Community Centre**

Special occasions, interest group or business meetings, workshops etc. [0407 875 460](tel:0407875460) | [SAPRAPres@southarm.tas.au](mailto:SAPRAPres@southarm.tas.au)

## **Volunteering**

### **Coastcare Opossum Bay & South Arm**

1st Sunday of month. 10am -12noon. Different venues. Robyn [0400 119 519](tel:0400119519)

### **Coastcare Pipeclay**

Autumn, Spring & Clean Up Aust Day working bees. [0408 121 304](tel:0408121304) | Facebook or [pipeclaycoastcare@outlook.com](mailto:pipeclaycoastcare@outlook.com)

### **Wildcare—Deslacs(Clifton)**

[info@wildcaredeslacs.org](mailto:info@wildcaredeslacs.org)

### **Coastcare Mortimer Bay**

Leanne [0408 498 468](tel:0408498468) | [mortimerbay@landcaretas.org.au](mailto:mortimerbay@landcaretas.org.au)

### **South Arm Fire Station**

South Arm Fire Station 2nd and last Tuesdays of the month, 7pm Cliff Munday, 2nd Officer, | [0476 015 911](tel:0476015911)

### **Sandford Fire Station**

Training each Monday 7.30pm Ben Cox, Brigade Chief [0418 129 954](tel:0418129954)

### **Clifton Beach Surf Life Saving Club**

President Matt Clingeffer, Secretary Katie Groom, [info@cliftonbeachslsc.com.au](mailto:info@cliftonbeachslsc.com.au) [www.cliftonbeachslsc.com.au](http://www.cliftonbeachslsc.com.au)

## **Water carters**

### **IMKH Water Supply & Cartage**

Domestic & civil. Marcus [0438 643 176](tel:0438643176)

### **Reliable Water**

Tim [0419 614 457](tel:0419614457)

### **South Air Water**

Damien [0417 928 377](tel:0417928377)

### **Streamline Water**

Wayne [0418 125 096](tel:0418125096)

### **Sandford Water Cartage**

Marcus [0400 598 678](tel:0400598678)

## **Wellbeing & health**

### **Acupuncture & Chinese Medicine**

Dr Bec Emmerton (TCM). Treating pain, fertility, women's health, health & wellness. [bekemmerton@gmail.com](mailto:bekemmerton@gmail.com) | [0432 079 849](tel:0432079849)

### **Tara Edwards Reflexology**

Qualified. Home visits for relaxation or health concerns (chronic pain, sleep, circulation, & digestion). \$80/hr Tara [0457 327 482](tel:0457327482)

### **Naturopath / Nutritionist & Psychic Medium/Healing**

Amanda Erskine in Sandford. Ph [0417 727 065](tel:0417727065)

### **Pamper Room**

Relaxation, Hot Stone, Oncology, Pregnancy Massage and Facials. Tania [0458 528 258](tel:0458528258) Facebook [www.pamperroom.com.au](http://www.pamperroom.com.au)

### **Gaia's Light Spiritual Consultancy**

Accredited Reiki Treatment Prac., Chakra Balance, Akashic Records Prac., Wisdom of the Tarot & Write from Source©. [evie@lightmygaia.com](mailto:evie@lightmygaia.com) | [0466718244](tel:0466718244) [lightmygaia.com](http://lightmygaia.com) |Facebook

# PENINSULA PESTS

## rabbits + cats

**SAPRA knows these two animals can have a significant impact on our environment, home and wildlife, causing much frustration, and sometimes heartache, in our community. But, we believe that rabbits can be removed and cats responsibly managed.**

Why? Because there are people here proving that rabbits can be removed and controlled. Others are mobilising a program to keep owned cats safe, healthy and well- managed and working to protect our wildlife (see over). **And we can all play a part to help.**

**Rabbits be gone - proof of what can be achieved.** Locals Ollie and Dan have been working with the Iron Pot Golf Club and neighbouring properties for a year and have *removed over 3,500 rabbits*. Numbers are now well down with zero population in some previously infested areas - all being monitored regularly. Fort Direction has indicated it will carry out a removal program to complement this work. This shows a co-operative approach *can* work.

Work underway to initiate a landscape-scale action program across South Arm has attracted strong interest from Biosecurity Tas, Landcare Tas, NRE, NRM, Centre for Invasive Species Solutions and other organisations. Interested in helping? Contact SAPRA.

**We might not like it but it's a landowner's legal responsibility to manage wild rabbits on their land.** Invasive species expert Simon Pahor of Effective Conservations Outcomes has provided the following information. He's a local so acutely aware of this issue.

**Rabbit control works best when it's coordinated.** Individual efforts can make a difference but real success comes when neighbours work together. Here you'll find an overview of control techniques for a range of properties, from large rural blocks to backyards.

For more detailed guidance: Biosecurity Tasmania ([nre.tas.gov.au/rabbits](http://nre.tas.gov.au/rabbits)), PestSmart ([pestsmart.org.au/toolkits/european-rabbits/](http://pestsmart.org.au/toolkits/european-rabbits/)) (The Biosecurity Tas flyer for controlling rabbit populations is also available at the South Arm Community Centre)

**PLAY  
YOUR  
PART!**

### HOW CAN I BEST CONTROL RABBITS?

*Coordinating with other community members and applying this adaptive management framework gives the best chances of success.*

#### STEP 1: PLAN

*Assess and understand the problem*

- Download the FeralScan app. Record rabbit sightings and register on RabbitScan.
- Record areas where rabbits are living, sheltering, or feeding on your property.

*Develop a plan and set clear objectives*

- This will be relevant to your property and/or group. Set relevant objectives. e.g. Rabbits won't access the area under my shipping container to breed, my vegetable garden or block will be rabbit proof.

#### STEP 2: MANAGE

*Choose control techniques and strategies and implement them*

- Select a combination of methods suited to your property. Using multiple techniques together, and coordinating with neighbours, will significantly improve effectiveness.

*Record actions in RabbitScan and monitor the plan's outcomes.*

#### STEP 3: IMPROVE

*Evaluate the plan and modify as required.*

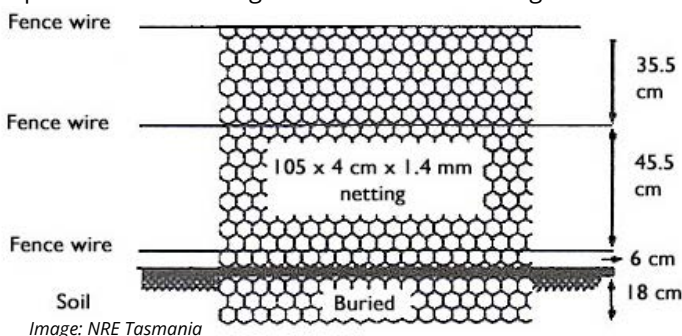
- Incorporate changes and improvements into next plan and future actions.

### EXAMPLE CONTROL ACTIONS

#### EXCLUSION FENCING

Effective fencing can prevent rabbits damaging your property, and accessing it for shelter or breeding.

- Rabbit-proof fencing uses galvanised 1.4mm wire netting with a maximum aperture of 40mm.
- Fences must be at least 90cm high. Mesh must be buried at least 18cm deep, or a 30cm skirt can be bent out and secured on the ground (in the direction rabbits will try to enter from) and buried.
- Wire can be retrofitted to existing fences (including along the bottom of timber fences). Wire can also be installed around the base of shipping containers and structures to prevent rabbits using these areas for breeding.



**HARBOUR REMOVAL** is a very effective, low-cost method for decreasing rabbit numbers. Removing refuge areas makes the immediate area less appealing to rabbits, and can decrease local rabbit damage.

Remove areas of above ground harbour such as areas of dense weeds and blackberries, rubbish piles, and overgrown old structures/vehicles.

**WARREN RIPPING** requires careful mapping of the warren to find all entrances, and then the use of heavy machinery to fully destroy the warren – local contractors are available to assist.

**SHOOTING.** Larger neighbouring blocks may coordinate to undertake targeted shooting to remove rabbits. Shooting is best used in combination with other methods. SAPRA can help you find skilled and safe local volunteers and contractors.

*Note: All shooting activities must be undertaken by suitably licensed persons in accordance with all laws and regulations including the Firearms Act 1996. In Tasmania, a licensed person must not discharge a firearm within 250 metres of a dwelling without the occupier's consent.*





# Sandford Cat Management

CARING FOR CATS  PROTECTING WILDLIFE

## A new community-led initiative focused on responsible cat ownership, cat welfare, wildlife protection and practical, local solutions is now underway across the South Arm Peninsula

The Sandford Cat Management Programme has been developed collaboratively between local community members, Ten Lives, Landcare Tas and The City of Clarence with support from Wildlife Network Tas.

The project aims to better understand local cat populations across the South Arm Peninsula and to work alongside the community to develop practical, positive and sustainable approaches to cat management.

**We recognise that cats are valued companions for many people - this project aims to keep owned cats safe, healthy and well-managed, whilst acknowledging the importance of protecting native wildlife and reducing the impacts associated with stray and unmanaged cat populations.**

**The first stage - community engagement and information gathering.** By sharing your local knowledge and contributing ideas around responsible cat ownership and community concerns in our survey, you'll help guide future strategies, ensuring the programme reflects local needs and priorities.

### Potential future initiatives may include:

- Community education around responsible cat ownership
- Support for cat containment and welfare practices
- Low-cost desexing initiatives (subject to funding)
- Free microchip clinic
- Targeted trapping\* and management of stray and feral cats
- Wildlife protection measures
- Ongoing monitoring and community consultation

Stay informed about community engagement and project activities by following the group on [facebook/sandford.cat.management](https://facebook.com/sandford.cat.management). More details also here [southarm.tas.au/sandford-cat-management-group/](https://southarm.tas.au/sandford-cat-management-group/)

The team hopes this initiative will encourage constructive conversations and collaborative action that benefits both cats and wildlife across the wider community.

**Contacts:** Natasha Glencairn-Campbell or Anna Beinssen [sapcats01@gmail.com](mailto:sapcats01@gmail.com)

*\* When trapping does begin, it will be well publicised and there will be a clear and humane process in place for the handling of any trapped cat. All trapped cats will be taken to Ten Lives to be scanned for microchips and, wherever possible, reunited with their owners.*

PLAY  
YOUR  
PART!

**PLEASE TAKE THE SURVEY AND SHARE WITH OTHERS**  
*your local knowledge and ideas on cat ownership helps guide us*

### Responsible Cat Ownership across the South Arm Peninsula



Scan the QR code

or go to

[tenlives.com.au/sandford-survey](https://tenlives.com.au/sandford-survey)

Your feedback is invaluable and supports our ongoing efforts to improve the lives of cats within our community.

